

FOREX TRADING STRATEGY

“Learn how to trade EUR/USD, USD/CAD, GBP/USD or any other major currency pair by mastering a system that combines top level mathematics with the fundamental principles of human behavior - simplified in such a way that even a high school dropout can quickly start profiting from it...”

by Quantum Globe Inc.

A “crack team” consisting of a top level PhD mathematician, a computer wizard and a behavioral psychologist is put together by a street smart trading professional to produce...

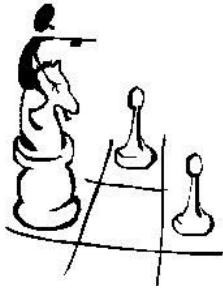
“A lethal “knee to the groin, thumb to the eye” **Forex Trading Strategy that transforms any average person into a ruthless money making predator that makes even the most hardened trading sharks spin their heads in disbelief... ”**

Copyright © 2005 All rights reserved

First Edition 2005. ISBN 0-0997773-04

Table Of Contents

Chapter 1 Introduction	3
1.1. Why should you trade forex market?	4
1.2. Which strategy should you use?.....	5
1.3. The ICWR phenomenon.....	6
1.4. Simplified trading example	8
Chapter 2 Scientific Research	19
2.1. Market signals based on the ICWR phenomenon	21
2.2. The proper long-term filter	26
2.3. Consistency checks.....	29
2.4. Why is our entry strategy so profitable?	34
2.5. Why is our exit strategy so profitable?	35
Chapter 3 The Intraday ICWR Trading Rules	41
3.1. Market signals generated by ICWR.....	42
3.2. When to enter a trade.....	55
3.3. When to exit a trade.....	56
Chapter 4 Intraday EUR/USD Trading Example	58
Chapter 5 Intraday CAD /USD Trading Example	75
Chapter 6 The Long-Term ICWR Trading Rules	89
6.1. When to enter a trade.....	90
6.2. When to exit a trade.....	90
Chapter 7 Long-Term EUR/USD Trading Example	91
Chapter 8 Long-Term GBP/USD Trading Example	113

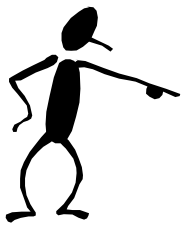


Chapter 1

Introduction

Two completely opposite “schools of thought” dominate today’s public opinion when it comes to financial markets. One school of thought is advocated by academic types, mostly economics, finance and mathematics professors. They will tell you that “markets are efficient” and that there is a zero chance for an individual to outperform any liquid financial market in the long run. Well, of course the guys with cushy university jobs, without any real world or business experience, will tell you that you don’t stand a chance to succeed. You should continue to work your little day job so that they have someone to make their sandwich or to change oil in their cars. People who subscribe to this theory usually choose to stay out of financial markets and keep their cash stashed in their mattresses.

Another school of thought is advocated by financial TV and radio stations, investment firms, brokerages etc... “Surprisingly” they are all trying to portray financial markets as an idyllic place where happy Moms, Dads and Grandpas use sophisticated software to place winning trades from their laptops while vacationing on sandy Caribbean beaches... Countless “talking heads” are enjoying their daily parade on TV channels such as CNBC or CNN supplying mostly worthless advice to general public. Their “analysts” change their opinion every day in a fashion that even George Orwell would find hard to comprehend. And everything they say always seems to “make sense” at the moment when they are saying it. Next day, when it turns out that they were totally wrong, they are telling you an entirely different story as if yesterday never happened. And if you noticed, the hosts never, ever bring that up. Why? Well, “the show must go on”. They have to show you that every day you are missing on countless trading opportunities; you just need to watch their shows, subscribe to fancy software that they sell you and you are on your way to early retirement.



I do agree with the statement that financial markets are efficient. They are very efficient in one thing - transferring money from bad and naive traders/investors to the pockets of those that know what are they doing. You are now probably asking yourself “What am I doing in this field? Do I have any chance to succeed?” The answer is “Yes, you do.”. The system that we are about to reveal to you is a fail proof entry and exit strategy that will put you on equal level with big investment firms and with experienced professional traders.

A question that I hear the most from aspiring traders is “Which market should I trade? - Stocks, Futures, Commodities...?” Well, with the right attitude and dedication there is money to be made in every market. However, there is one market that is still largely neglected by smaller traders even though it offers great profit potential and numerous trading opportunities. It is Forex or Foreign Exchange market.

1.1. Why should you trade forex market?

Simply said, no other trading instrument comes even closely to forex market when it comes to liquidity, 24hr market environment and last but not the least, profit potential. Forex (currency) market is the largest (most liquid) financial market in the world, with an average daily volume of more than US\$ 1.5 trillion, which is more than all of the global equity markets combined.

Forex trading day starts in Wellington, New Zealand followed by Sydney, Australia, Hong Kong and Singapore. Three hours later trading day begins in Dubai (UAE) and other Middle Eastern countries. In couple of hours they are followed by Frankfurt, Zurich, Paris, Rome... London is the last one to open in Europe and five hours later it is followed by New York, Chicago and finally the West Coast. The busiest hours are early European mornings because at that time major Asian exchanges are still open and European afternoons because at that time major US markets are open at the same time as Europe. Therefore, wherever you live and whatever your work hours are you can always find

some time to participate in forex trading as opposed to stock market where you are usually limited to the regular business hours.

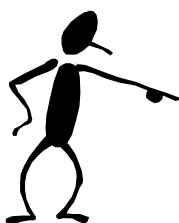
Another property of forex market that makes it an excellent trading instrument is use of leverage. Many beginning traders don't fully understand the concept of leverage. Basically, if you have a start up capital of \$5,000 and if you trade on a 1:50 margin you can effectively control a capital of \$250,000. However, a two percent move against you and your capital is completely wiped out. If you are a beginning trader you should not use more than 1:20 margin until you get comfortable and profitable and then and only then you can attempt to use higher margins. What does 1:20 margin mean? It means that with your \$5,000 you will control a capital of \$100,000. Let's say you are trading EUR/USD and by using our entry strategy you have decided to enter the trade on a long side. That means that you are betting that USD will depreciate against Euro. Let's say current EUR/USD rate is 1.305. Again, if your trading capital is \$5,000 and you are using 1:20 leverage you will effectively be exchanging \$100,000 to Euros. If the current rate is 1.305 you will receive $100,000/1.305 = 76,628$ Euros. If the trade goes in your direction the margin will work in your favour and 1% decline in USD will mean 20% increase in your start up capital. So if EUR/USD rate moves from 1.305 to 1.318 you will be able to exchange your 76,628 Euros back to \$101,000 for a profit of \$1,000. Since your start up capital was \$5,000 it is effectively a 20% increase in your account. However, if the trade went against you and USD appreciated 1% vs. Euro your account would be reduced to \$4,000. That would not have happened as our strategy has built in hard stops to prevent such outcome.

And the third and equally important property of forex market is the fact that trends in forex market last longer and are more clearly defined than in any other trading instrument.

1.2. Which strategy should you use?

Another question that is often asked by aspiring traders is "What kind of trading approach should I use – day trading, swing trading, position trading? How many indicators should I use? Should I follow the TV news channels?..."

If you are facing similar dilemmas let me try to make an analogy. If you were attacked in a dark alley and you felt that your life was in real danger what kind of defence technique would you attempt to use. Would you attempt to kick your assailant with some fancy kung fu move that you saw in a movie? Or would you use some basic but brutally effective “knee to the groin”, “thumb to the eye” technique that is easy to implement and that you are 100% certain will have an effect? When you have your hard earned money riding on your trades maybe your life is not at stake but your and your family’s livelihood is. The goal of all the other traders in the market is to take your money. And if you are going to play around with some fancy tools and indicators that you don’t even understand you can be assured that your hard earned money will be paying someone’s BMW lease payments.



If you want to get to the top of the forex market “food chain” you have come to the right place. The strategy that we are about to reveal to you is a completely new, efficient and reliable trading strategy that comes as the result of years of forex market research using sophisticated mathematical methods and is based on a fundamental property of financial markets.

1.3. The ICWR phenomenon

Regardless of how strong a long-term market trend is, the market never moves only in the direction of the long-term trend – there are always minor movements against the long-term market trend. These deviations usually don’t last very long and after them the market moves again in the direction of the long-term trend.

The major market movements in the direction of the long-term market trend are called **impulsive waves** and the minor market movements against the long-term market trend are called **corrective waves**.

The picture below (Figure 1.1) shows a snapshot of a EUR/USD candlestick chart. Although the market shows **both** upward and downward market movements it can be easily recognized that the long-term market trend is clearly bearish as between 07:00 AM

and 11:00 AM the price failed around 140 pips (from 1.3500 at 07:00 AM to 1.3360 at 11:00 AM, that is $1.3500 - 1.3360 = 0.0140 = 140$ pips). The waves (1), (3) and (5) are the impulsive waves; the waves (2) and (4) are the corrective ones.



Figure 1.1.

Our main observation, **until now disregarded by all traders in their trading strategies**, is that when putting into relationship **the height of a corrective wave and the height of the prior impulsive wave, the corrective wave tends to retrace the prior impulsive wave in Fibonacci ratios**. Frequent relationships are 25%, 38%, 50%, 61% and 75%. Up to now we will refer to this effect as the **Impulsive/Corrective Wave Retracement (ICWR)** phenomenon. For example in the picture below (Figure 1.2) the corrective wave (2) retraces the impulsive wave (1) in the Fibonacci ratio of 0.382.

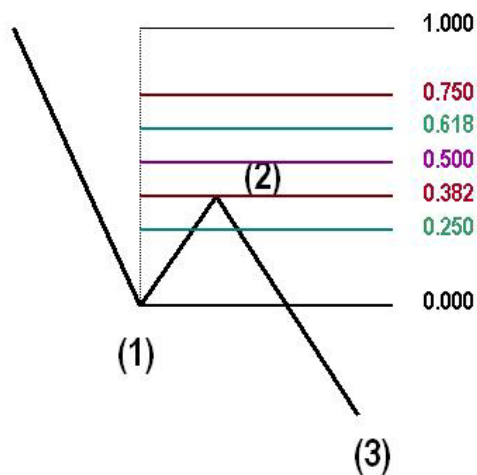
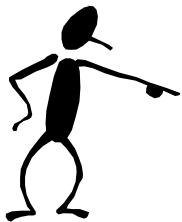


Figure 1.2.

The ICWR phenomenon is a typical self-similarity effect of a complex system. For all kind of complex systems in nature as social, chemical or physical systems such self-similarity effects can be found. Self-similarity is a fundamental property of self-organized complex systems and is a matter of recent intense investigation by physicists and mathematicians.

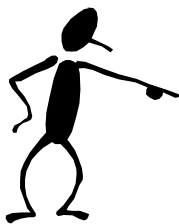


We have used the phenomenon described above as a starting point to develop a completely original and until now unpublished trading strategy that combines basic principles of Elliot Wave theory together with well-known properties of Fibonacci ratios. The result is amazing, as you will soon find out. We have named the strategy “Impulsive/Corrective Wave Retracement (ICWR) Trading Rules”.

1.4. Simplified trading example

Before going into the details of our strategy we will introduce it to you by showing you a simplified, shortened version and in the later chapters you will be shown how to put it to use and immediately start taking advantage of it. Our strategy gives the best possible entry as well as exit moment. In the example below we will show you only the part that is usually neglected by most of the trading strategies currently in use – **how to find out the**

best moment to exit the trade. For the purpose of making the example easier to follow we will assume that we have already found the best moment to enter the trade.



While going through the trading example below you will realize that the part of our strategy related with the exit signal follows the fundamental trading rule “cut the losses short and let the profits run” - in a way that was never accomplished before.

And, why is this fundamental trading rule so important?

Because not letting the profits run will make your trading unprofitable in the long run: two losses of 50 pips followed by a win of 80 pips results in a net loss of 20 pips. In contrast two losses of 50 pips followed by a win of 250 pips, reachable with our strategy, results in a net win of 150 pips! I’m sure you get the point.

Here is an example of a GBP/USD trade exit by using our strategy.

Note: All of the elements of the strategy are clearly explained in the later chapters. The purpose of the example below is to give you a glimpse into the exit part of the strategy.

Suppose we entered the market short at point A (07:00 AM, 01/04/05) buying 10,000 USD at the entry price of 1.9075 (see Figure 1.3).



Figure 1.3.

For the first moment (see Figure 1.4) the market moved into our direction and reached the point B. At that point the market reached a value of 1.9028. That means 48 pips in our direction. So far, so good.



Figure 1.4.

However, after the point B (see Figure 1.5) the market starts an upward movement. What to do now? Inexperienced trader would close the position as a scared rabbit, happy to take

even small profit from the trade. But this would be the wrong decision. Why? Remember, we have to “let the profits run”, if we want to make trading profitable in the long run.

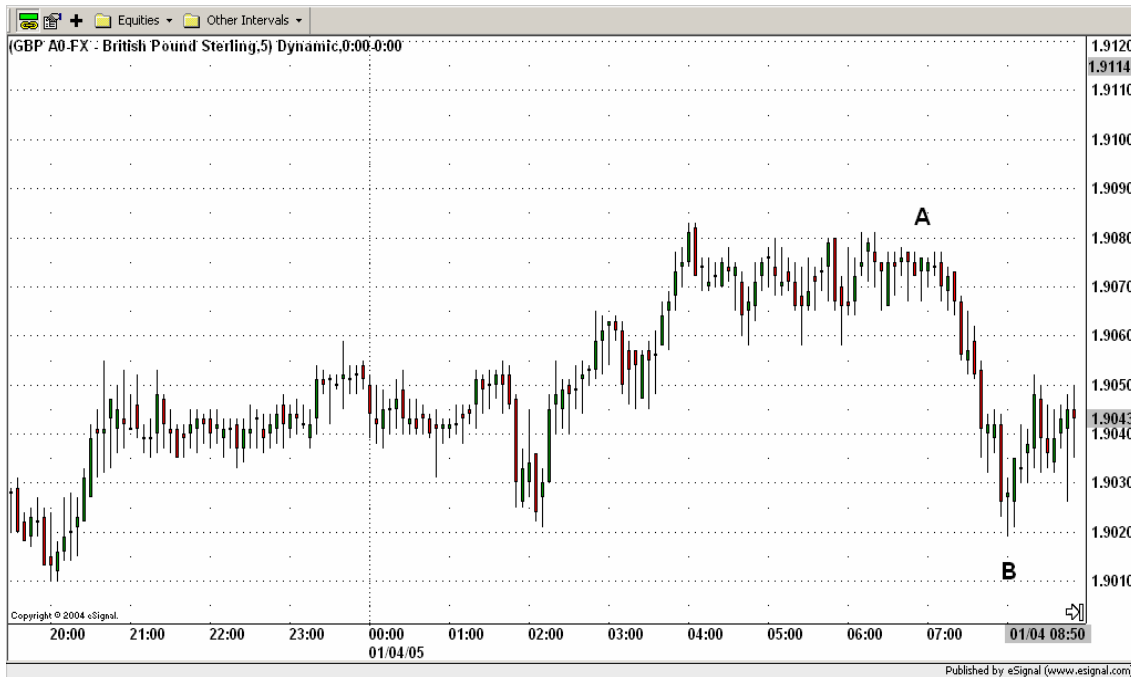


Figure 1.5.

So what do we do?

The essential question is:

When do we decide that our trade has run out of steam and should be exited?

This is where our strategy comes into play. By using the “Impulsive/Corrective Wave Retracement Trading Rules” we will find the best possible time to exit the trade and extract maximum profit from each trade.

In order to apply our trading strategy the following trading setup has to be done.

First of all the highest and the lowest value of the downward movement are determined. For this purpose we draw a line connecting both extreme values. In our case the extreme values of the downward movement are point A (around 07:00) and point B (around 08:00). We will connect them with the thick blue line (see Figure 1.6).



Figure 1.6.

Further on we draw the Fibonacci levels using the lowest value of the downward movement (point B) as the starting point (level 0.000) and the highest value of the downward movement (point A) as the ending point (level 1.000). As we are only interested in the 0.000, 0.250, 0.382, 0.618, 0.750 and 1.000 levels, only these levels will be drawn (see Figure 1.7).

We are going to exit the position only in the case that the price goes beyond the 0.750 level, i.e. if it happens that a whole candlestick is above the 0.750 Fibonacci level.

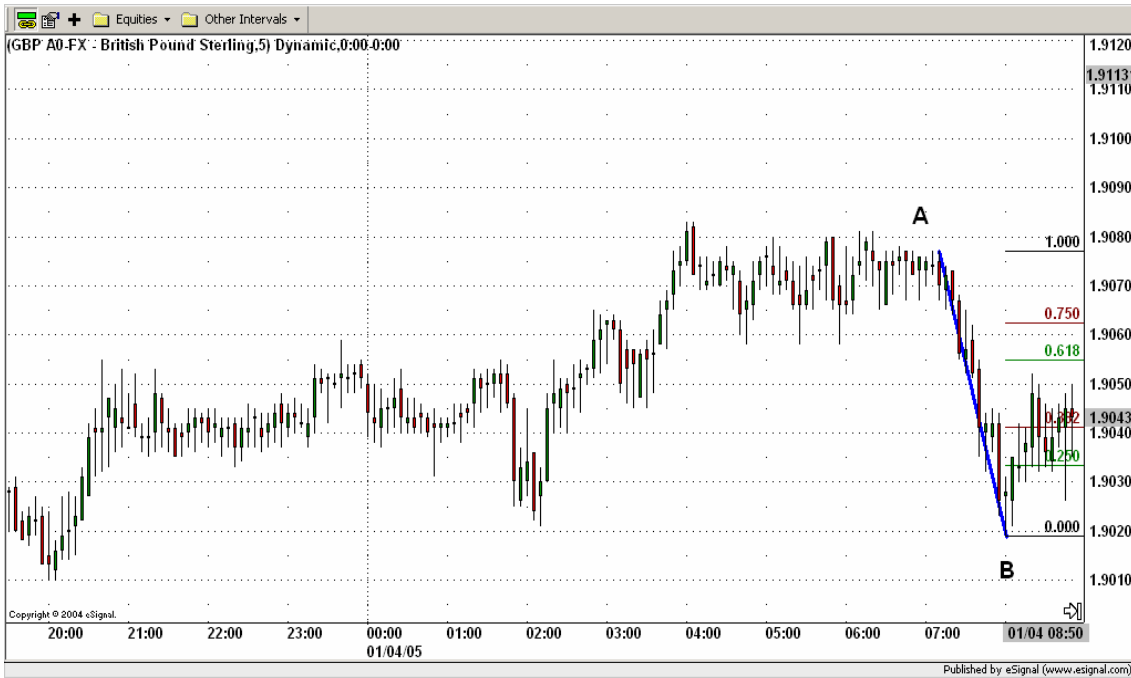


Figure 1.7.

The upward movement retraced at the 0.618 Fibonacci level approximately at the point C at 08:50 AM. As the price didn't move beyond the 0.750 Fibonacci level we remain in the trade. Ok, let's look what happens next. After point C the market moves again downwards in our direction until it reaches a low point around 11:10 at the point D. After that the price starts to rise again (see Figure 1.8). Nevertheless letting the profit run did pay off, as the distance to our entry point is already around 100 pips (at point B the distance was only around 50 pips).

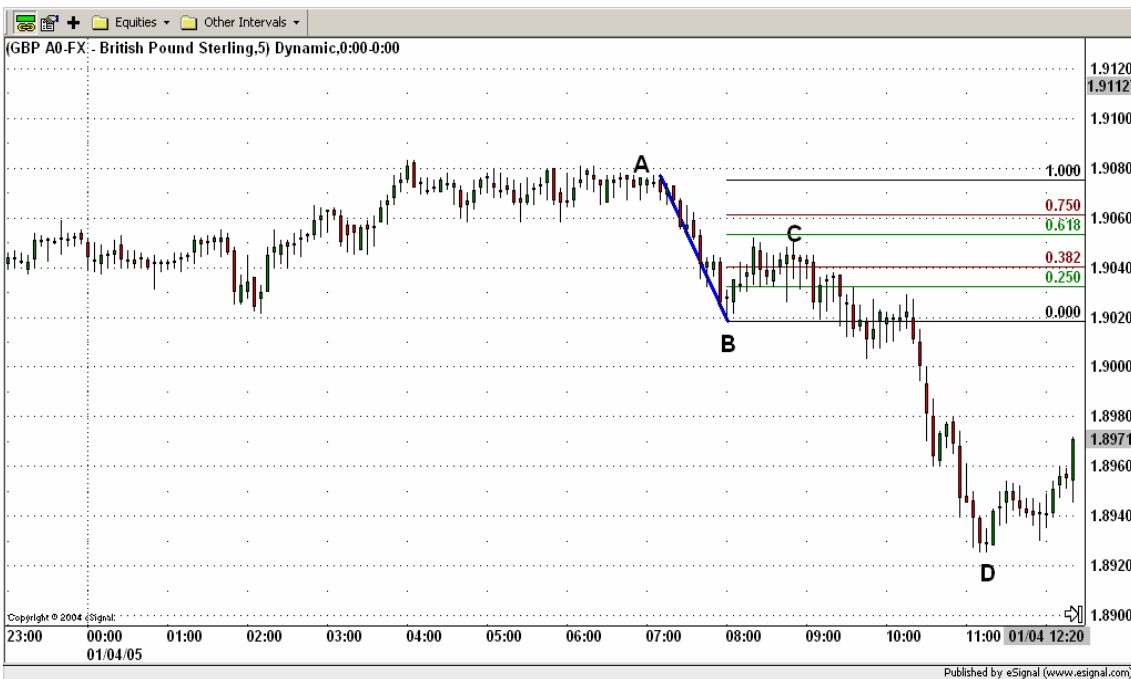


Figure 1.8.

Again it is the “Impulsive/Corrective Wave Retracement Trading Rules”, which are helping us decide whether to remain in the trade or not. Again the trading setup is done: a line is drawn connecting the extreme values (C-D) of the downward movement and based on this line the Fibonacci levels are drawn (see Figure 1.9). And again: we are only going to exit the position if the price goes beyond the 0.750 Fibonacci level.

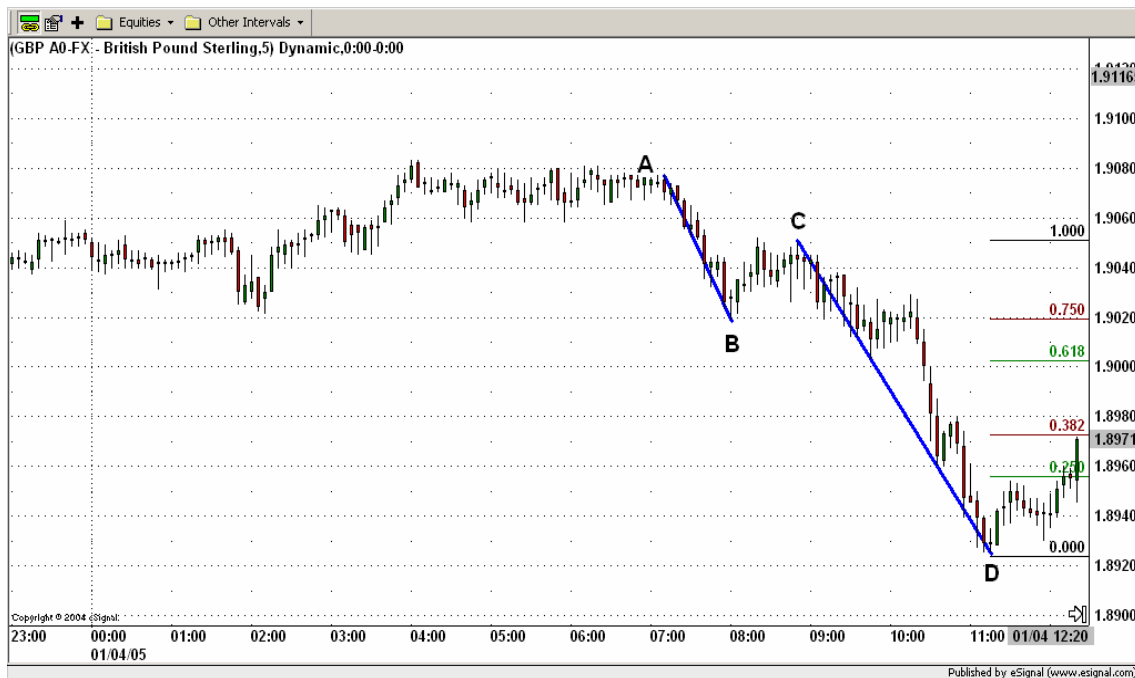


Figure 1.9.

The upward movement retraced at the 0.618 Fibonacci level approximately at point E at 12:25 AM. As the price didn't move beyond the 0.750 Fibonacci level we remain in the market. Let's look what happens next. After point E the market moves again downwards in our direction until it reaches a low point around 14:25 at the point F. After that, again the price starts to rise (see Figure 1.10). The distance to our entry point is now around 120 pips.

Again we set our trading setup: a line is drawn connecting the extreme values (E-F) of the downward movement and based on this line the Fibonacci levels are drawn. Remember, we are only going to exit the position if the price goes beyond the 0.750 Fibonacci level.



Figure 1.10.

The upward movement retraced at the 0.750 Fibonacci level approximately at point G at 14:40. As the price didn't move beyond the 0.750 Fibonacci level we remain in the market. Let's look what happens next. After point G the market moves again downwards in our direction until it reaches a minimum around 17:30 at the point H. After that, again the price starts to rise (see Figure 1.11). The distance to our entry point is now around 200 pips.

Again we set our trading setup: a line is drawn connecting the extreme values (G-H) of the downward movement and based on this line the Fibonacci levels are drawn. Remember, we are only going to exit the position if the price goes beyond the 0.750 Fibonacci level.



Figure 1.11.

The upward movement retraced at the 0.250 Fibonacci level approximately at point I at 20:25. As the price didn't move beyond the 0.750 Fibonacci level we stayed in the market. Ok, let's look what happens next. After point I the market moves again

downwards in our direction till it reaches a minimum around 20:40 at the point J. After that, again the price starts to rise (see Figure 1.12). The distance to our entry point is now around 270 pips.

Again we set our trading setup: a line is drawn connecting the extreme values (I-J) of the downward movement and based on this line the Fibonacci levels are drawn. Exit signal occurs if the price breaks the 0.750 level.



Figure 1.12.

After 21:00 the market trend starts to turn bullish. As of 01:15 the price has gone beyond the 0.750 level (the whole candlestick is above the 0.750 level at point K) we exit the trade selling 10,000 USD at the price of 1.8838 (see Figure 1.13).



Figure 1.13.

For this trade a profit of $1.9075 - 1.8838 = 0.0237 = 237$ pips was realized. Using a leverage of 1:20 it means a profit of $10,000 \times 0.0237 \times 20 = 4,740$ USD.

That means a profit of 4,740 USD after one trading day!



Figure 1.14.

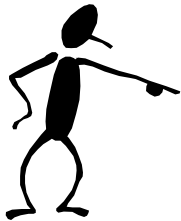
As you can see from the Figure 1.14 above our exit strategy was able to determine the best possible time to exit the trade and extract maximum profit from it.

In order to show you how efficient our strategy actually is, we will compare the result we achieved with the result we would have achieved if we had used a trailing stop instead.

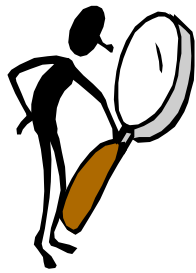


Figure 1.15.

As you can observe from the Figure 1.15 above after entering the position the market was clearly going in our direction (at the point D a profit spread of almost 150 pips was already reached). However, the trailing stop doesn't give the trade enough space to run.



If we would have used a trailing stop to exit the trade we would have achieved a profit of only 90 pips and our trade would have finished too early. Instead, using our strategy a profit of 237 pips – almost three times more – is achieved!



Chapter 2

Scientific Research

Note: We have included this chapter in our manual in order to give our reader a glimpse into the making of a profitable trading system. Some of the technical language that is included may be new to some of our readers. However the understanding of this chapter is not necessary for the successful implementation of our strategy (which is fully explained in the latter chapters).

In our quest to find the most profitable and at the same time for a “small” trader feasible trading system we have tested and analysed many different trading strategies. The strategies that we have tested were ranging from simple combinations of TA indicators to more complex trading systems that were utilizing support/resistance levels, pivot points, chart patterns etc... However in order to reduce the number of systems that were later scrutinized more closely, we have developed our own system selection criteria. Basically the system that we were after had to have following properties: Simplicity, Efficiency and Consistency.

Simplicity

As we all know forex trading strategies are becoming more and more complex and sophisticated. What does it mean for our average independent trader? It means that our simplicity factor when developing a trading strategy gains in importance. What usage could an average person make from a strategy that requires or presumes a profound knowledge in mathematics at a PhD level and a computing power beyond that of the newest personal home computer? A type of highly complex strategies commonly used by

investment companies are neural networks¹. A neural network is, in short, a model of interconnected neurons (also known as nodes) that is inspired by the logical neurons in human nerve system. Like the human brain a neural network can acquire, store and utilize experiential knowledge in order to improve its performance day by day. Regrettably, to consistently use a strategy based on neural networks one requires the complex knowledge of how to feed a neural network with history data as well as excessively high computing power not affordable to our average forex trader. Therefore we have set ourselves with a goal of finding a trading strategy that is comparable in its profit potential to the most complex professional trading system and at the same time is feasible and understandable to our average trader.

Efficiency

Efficiency of a trading strategy is basically a measure of profit that is realized using the strategy during specified period of time. When comparing different trading strategies, those strategies that show more profit during specified period of time are said to be more efficient.

Consistency

Once we have found a system that is efficient and simple to use our next most important selection criteria becomes consistency. What does it mean for a strategy to be consistent? It means that when the financial market behaviour changes slightly or even drastically, as often happens in times of political and financial crisis, the strategy is still able to make profit.

It means that a strategy with high efficiency and high consistency is a much better and safer strategy than a strategy with high efficiency but lower consistency. It is the consistency of a strategy that permits traders to plan for capital draw downs and potential profit build up.

A consistent strategy shows the following properties:

¹ V.V.Kondratenko and Yu. A Kuperin, "Using Recurrent Neural Networks To Forecasting of Forex", Condensed Matter, (2003)

- The strategy is profitable even in turbulent times, as for example directly after September 11.
- The strategy retains positive efficiency if the financial market behaviour changes slightly. This can be simulated changing slightly the parameters of the strategy. For example if a strategy has worked well in the past with a hard stop order of 50 pips it should also perform well if the stop order is changed to for example 55 pips, or 45 pips...
- The probability of losing all the trading capital during specified period of time needs to be extremely small, that is almost non existent. I don't think that the importance of this property needs to be explained any further. ☺

We came to the result that our new developed strategy based on the ICWR phenomenon was the most powerful trading strategy, as it was the most efficient and most consistent strategy from all the tested strategies and at the same time feasible and understandable for our average trader. We had to put a lot of effort and time into forex market research to come to this conclusion. In the following we want to give you only a short look into our long way to our strategy.

First of all we will show you some of the milestones of the strategy development. That is how to define reliable and consistent market signals based on the ICWR phenomenon (see chapter 2.1.) and how to find the proper long-term filter for enhancing the performance of our strategy (see chapter 2.2.).

Finally we will give you some remarks regarding the high consistency (see chapter 2.3.) and high efficiency (see chapters 2.4. and 2.5.) of our strategy.

2.1. Market signals based on the ICWR phenomenon

Well, as told in the introduction (see chapter 1.3.), our strategy bases on the observation that when putting into relationship the height of a corrective wave to the height of the prior impulsive wave, the corrective wave tends to retrace the prior impulsive wave in Fibonacci ratios. Frequent relationships are 25%, 38%, 50%, 68% and 75%.

Our task was to define **consistent** and **efficient** rules for generating bearish and bullish signals based on the ICWR effect.

The open points were the following:

1. To find out the proper Fibonacci levels to be used.
2. To find out the proper triggers for identifying an impulsive or a corrective retracement.

As you can imagine there exist really a lot of possibilities of defining rules for generating signals based on the ICWR phenomenon. The problem of making the rules too simple is that they don't cover all of the possibilities that may arise when markets behave unusually.

Such an unusual behaviour is for example a candlestick being greater 3 times or more than its immediate neighbours. That means that there is a huge difference between the highest and the lowest value of that period. Such a candlestick represents a highly volatile time period. For example in the Figure 2.1. below, such a volatile time period at 08:00 on the 02/07/05 is recognized with the candlestick having a height around 60 pips, while around it, the other candlesticks have a height of 10-15 pips.

Ok, suppose that the rule for recognizing a bullish signal in the case of an upward movement is the recognition of the price bouncing off any Fibonacci level (0.750, 0.618, 0.500, 0.318 or 0.250). After the upward movement starting at 06:10 and ending at 07:35 we could (following the former simple rule) make around 08:00 following market reading: around 08:00 we see the price clearly above the Fibonacci levels after having bounced off at the 0.382 Fibonacci level (around 07:50) and in consequence this would represent a bullish signal (see Figure 2.1).

But such a bullish signal makes no sense, as such an isolated and highly volatile candlestick has **nothing** to do with the impact of the ICWR phenomenon into the market.



Figure 2.1.

Another factor that we had to take into account is a sideways market, which can very easily generate false signals. For example in the Figure 2.2. below, after 17:00 the market doesn't show any clear trend.

Ok, suppose the used rule for recognizing a bearish signal in the case of an downward movement is again the recognition of the price bouncing off any Fibonacci level (0.750, 0.618, 0.500, 0.318 or 0.250). After the downward movement starting at 11:00 and ending at 16:00 we could (following the supposed simple rule) make around 18:00 the following market reading: the price is below the 0.250 Fibonacci level after having bounced off it around 17:00 and in consequence this would represent a bearish signal.

However it would make no sense, as such a sideways market has again **nothing** to do with the impact of the ICWR phenomenon into the market..



Figure 2.2.

Because of that, the main effort had to be put into finding efficient and at the same time reliable rules (that is immune to the other effects of the market) for generating market signals based on the ICWR phenomenon. You will find these rules to be defined in detail in the chapter 3. "Intraday ICWR Trading Rules".

For the sake of completeness let us just remark that in the shown examples (Figures 2.1 and 2.2) we get the right market signals when using our ICWR Trading Rules.

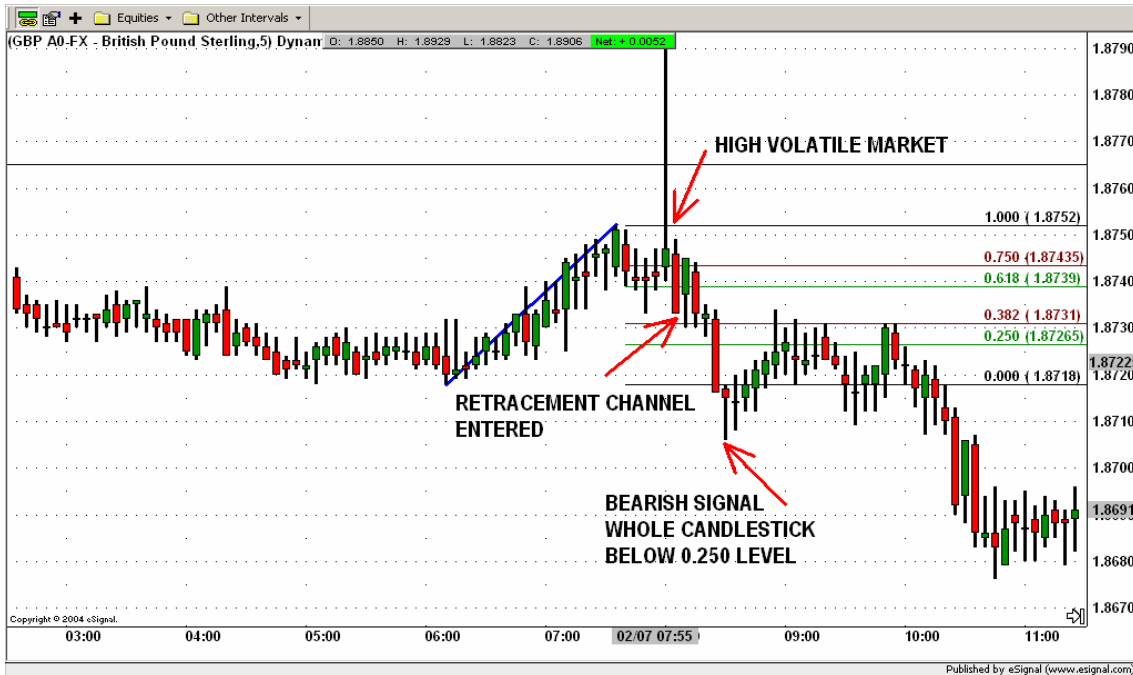


Figure 2.3.

In the example with the high volatile candlestick at 08:00 in Figure 2.3 no signal is generated when using our ICWR Trading Rules for two reasons. First, because the whole candlestick is not above the upper confirmation level (0.750). And second, no retracement channel is entered; even if the whole candlestick at 08:00 was above the 0.750 level no bullish signal would have been generated. Not only a false bullish signal is avoided, but also later the ICWR Trading Rules generate a correct bearish signal corresponding to the real market trend.

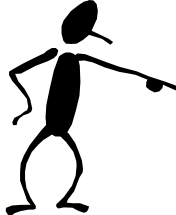


Figure 2.4.

In the example of a sideways market in Figure 2.4 no signal is generated, as no whole candlestick is below the lower confirmation level (0.250).

2.2. The proper long-term filter

When developing a trading strategy, it makes sense to search for a proper long-term indicator in order to filter out the entry signals from the short-term scale. The reason is that such long-term filters make the strategy considerably more powerful (meaning more efficient and more consistent). In our case the short-term time period for intraday trading is five minutes candlestick and for long-term trading time period is four hours candlestick.



Why do long-term filters make a strategy more efficient? The reason is quite simple. Suppose we are doing intraday trading. As we want to let our profits run, we are going to stay in the market typically for a couple of hours and sometimes even for a couple of days. Basically long-term filters are filtering out those entry signals that are not in the concordance with the long-term market behaviour.

2.2.1. Enhancing the Intraday Strategy

In order to enhance the **intraday** strategy based on the ICWR phenomenon the following TA indicators and rules were tested:

MA(x): The 20-period simple moving average from the x-period candlestick chart is used. The long-term signal is bullish if the actual value of the moving average is above the actual price. The long-term signal is bearish if the actual value of the moving average is below the actual price. X represents 30 minutes, 1 hour, 4 hours and 1 day. For example MA(1h) stays for the 20-period simple moving average from a one hour candlestick chart.

RSI(x; 50/50): The x-period Relative Strength Index (RSI) is used (calculated using the last 14 values). The long-term signal is bullish if the actual value of the RSI is above 50. The long-term signal is bearish if the actual value of the RSI is below 50. X represents 30

minutes, 1 hour, 4 hours and 1 day. For example RSI(4h; 50/50) represents the 14-period Relative Strength Index from a four hours candlestick chart.

RSI(x; 60/40): The x-period Relative Strength Index (RSI) is used (calculated using the last 14 values). The long-term signal is bullish if the actual value of the RSI is above 60. The long-term signal is bearish if the actual value of the RSI is below 40. X represents 30 minutes, 1 hour, 4 hours and 1 day.

CCI(x; 0/0): The x-period Commodity Channel Index (CCI) is used (calculated using the last 20 values). The long-term signal is bullish if the actual value of the CCI is above 0. The long-term signal is bearish if the actual value of the CCI is below 0. X represents 30 minutes, 1 hour, 4 hours and 1 day.

CCI(x; 50/-50): The x-period Commodity Channel Index (CCI) is used (calculated using the last 20 values). The long-term signal is bullish if the actual value of the CCI is above 50. The long-term signal is bearish if the actual value of the CCI is below -50. X represents 30 minutes, 1 hour, 4 hours and 1 day.

In the Figure 2.5 shown below you can see the result² of using the different long-term filters. The red thick line represents the result of the trading **without** a long-term filter (around 2700 pips of net profit).

² The net result shown in the pictures is the average net profit, when trading five months in parallel the currencies EUR/USD, GBP/USD and CAD/USD using the ICWR Trading Rules. The average is calculated based on two years historical back-testing.

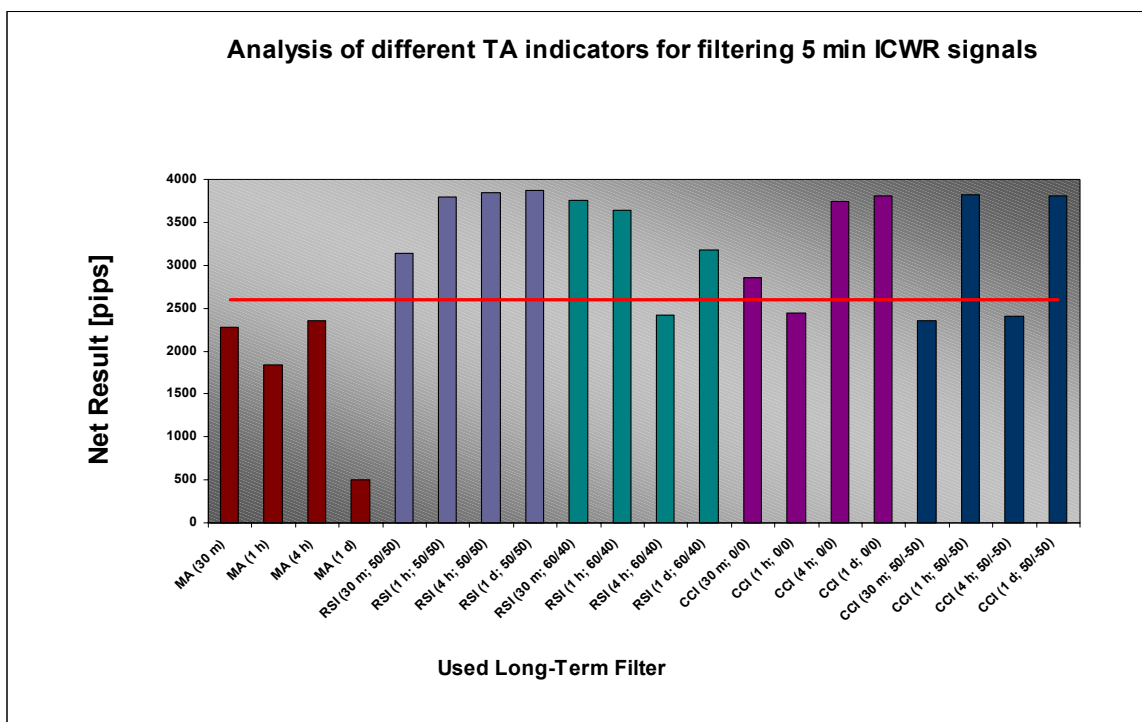


Figure 2.5.

As you can observe from the red line shown on the Figure 2.5 above our strategy is already highly profitable even without long-term filter, however when combined with some of the long term filters it becomes even more profitable. For example, when using the RSI(1 day; 50/50) long-term filter a profit of around 3900 pips is achieved which is 56% more profit than without this filter!

The proper long-term filter was found to be the RSI(1 d; 50/50) as it was the one with the highest efficiency.

2.2.2. Enhancing the Long-Term Strategy

In order to enhance the **long-term** strategy based on ICWR phenomenon the long-term filters MA(1d), RSI(1d; 50/50), RSI(1d; 60/40), CCI(1d; 0/0) and CCI(1d; 50/-50) were tested.

In the Figure 2.6 shown below you can see the results of using the different long-term filters.

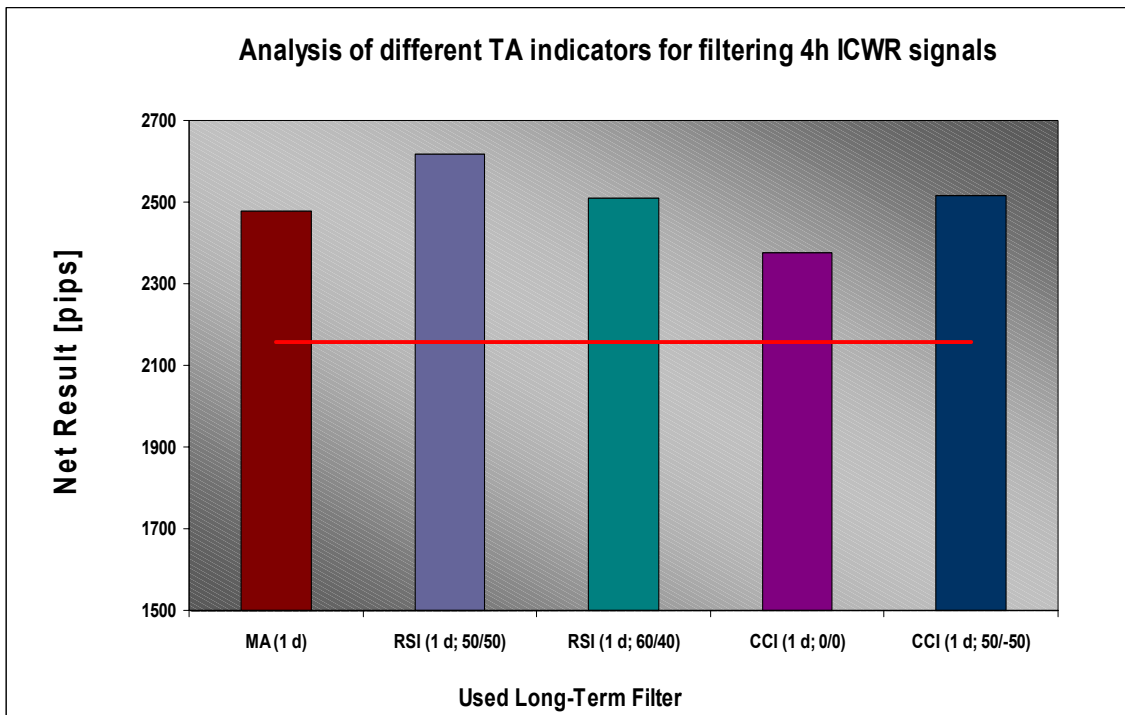


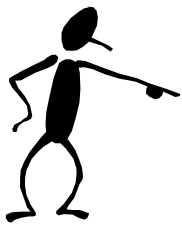
Figure 2.6.

The red thick line represents the result of our strategy **without** a long-term filter (around 2450 pips of net profit). Again, as in the intraday trading the ICWR strategy is already highly profitable however when combined with long term filters it becomes even more profitable. For example when using the RSI(1 day; 50/50) long-term filter a profit of around 2625 pips is achieved (before only around 2450).

For our trading rules the RSI(1 day; 50/50) was chosen as the long-term filter, as it was the one with the highest efficiency.

2.3. Consistency checks

Earlier in this chapter we have mentioned how important it is for a strategy to be consistent. In the long run it is the consistency of a strategy more than its efficiency that will make you successful in the trading business.



The strategy presented in this book is highly consistent. Showing you all the analysis done in order for us being able to make this statement would go clearly beyond the scope of this chapter, as we would be forced to bore you with pages and pages full of complicated statistical stuff. As this is not relevant for your trading we decided to show you only an extract from our analysis. That is the graphs showing that our strategy is immune to small changes in the given parameters – which simulates a slight change in the forex market behaviour.

The parameters of our strategy are:

- The minimum height of a movement to be considered as an active wave (used is 40 pips for intraday, 150 pips for long-term trading)
- The distance between the entry price and the hard stop order (used is 40 pips for intraday, 100 pips for long-term trading)
- The minimum RSI value for the market considered bullish (used is 50 both for intraday and long-term trading)
- The maximum RSI value for the market considered bearish (used is 50 both for intraday and long-term trading)

These parameters are part of our trading rules, which are defined latter in detail in the chapter 3. “Intraday ICWR Trading Rules”.

As you can see from the Figures shown below (Figures 2.7 till 2.12), our strategy performs equally well when parameters are slightly changed. Both for the Intraday ICWR and the Long-Term ICWR Trading Rules.

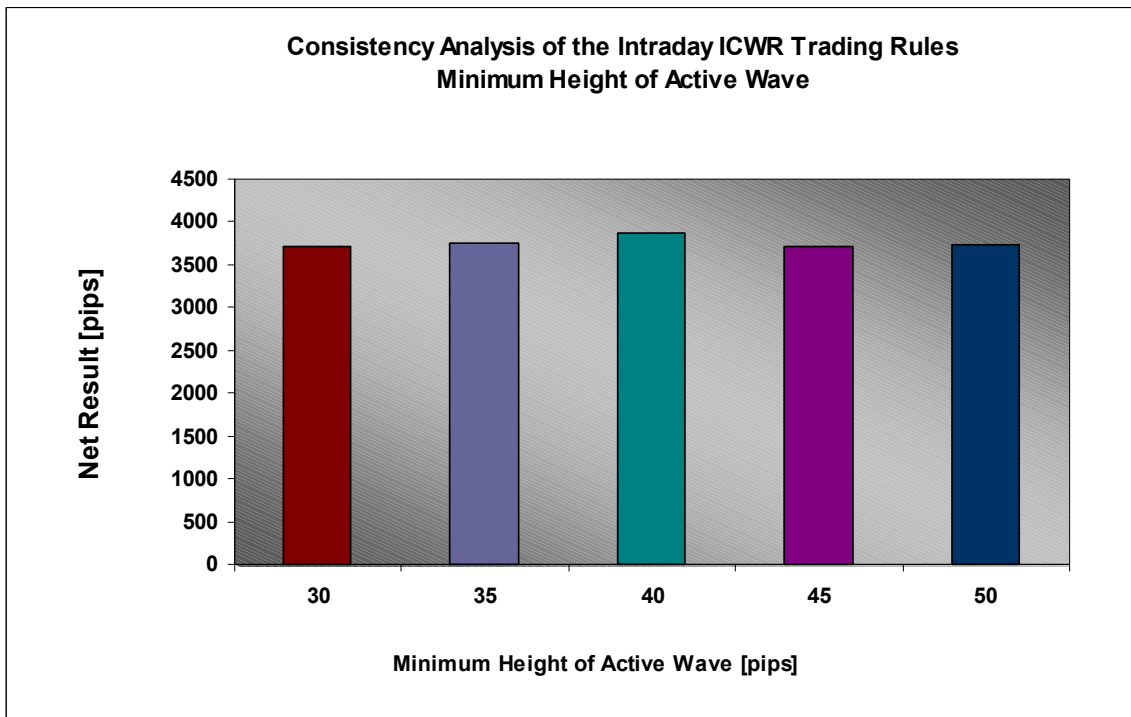


Figure 2.7.: Net result [pips] in dependence of the minimum height of the active wave for the **intraday** ICWR trading rules

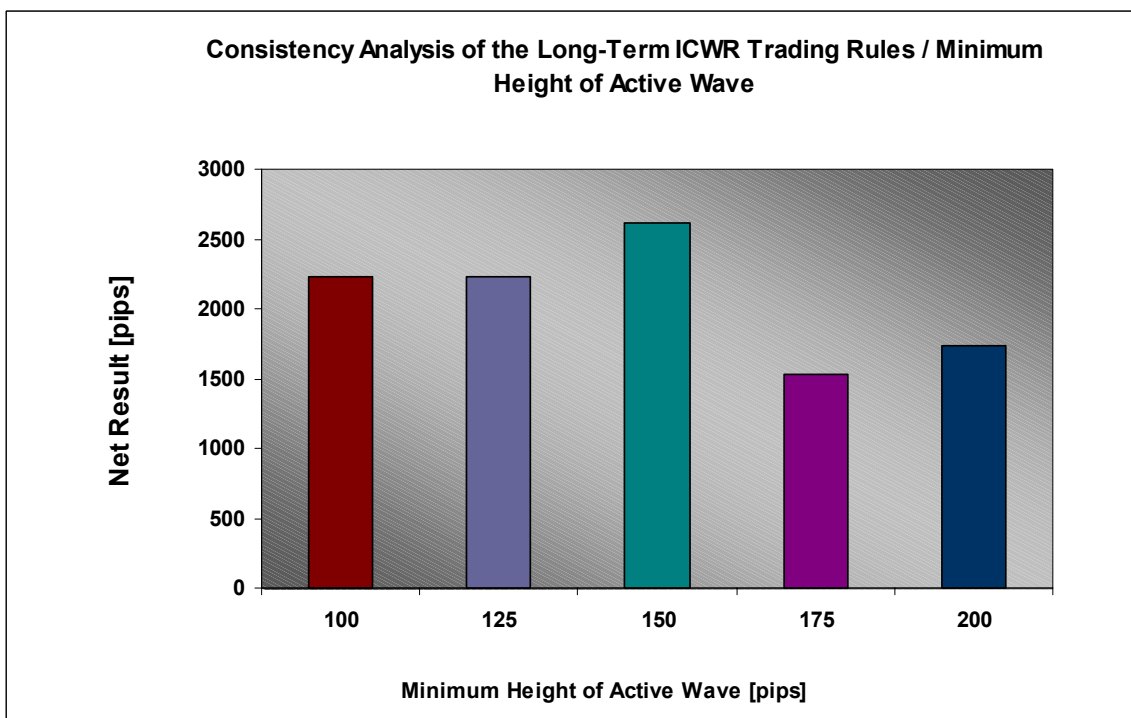


Figure 2.8.: Net result [pips] in dependence of the minimum height of the active wave for the **long-term** ICWR trading rules

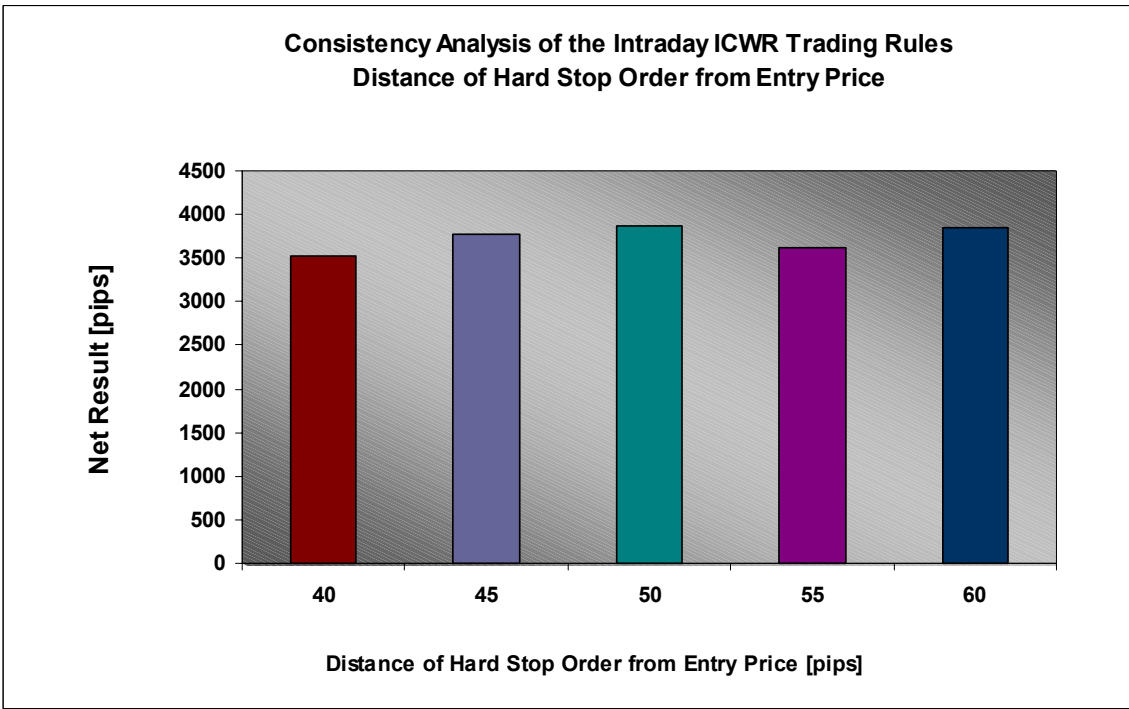


Figure 2.9.: Net result [pips] in dependence of the distance of the stop order from the entry price for the **intraday** ICWR trading rules

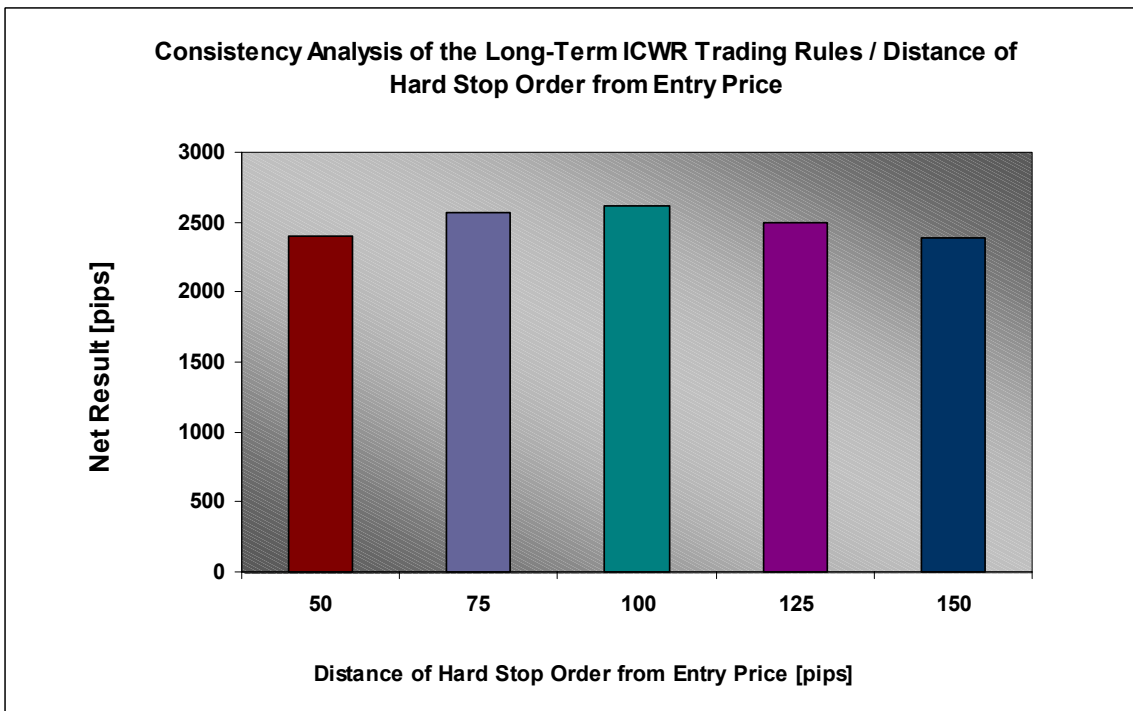


Figure 2.10.: Net result [pips] in dependence of the distance of the stop order from the entry price for the **long-term** ICWR trading rules

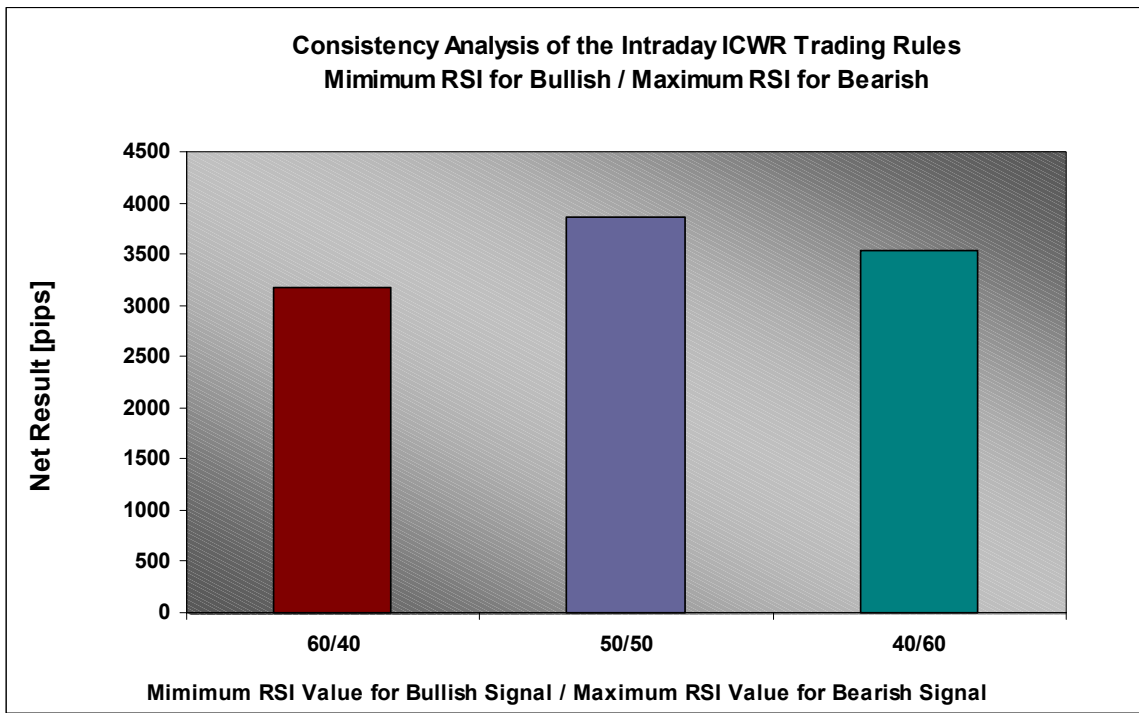


Figure 2.11.: Net result [pips] in dependence of the minimum/maximum RSI value for the market considered bullish/bearish for the **intraday** ICWR trading rules

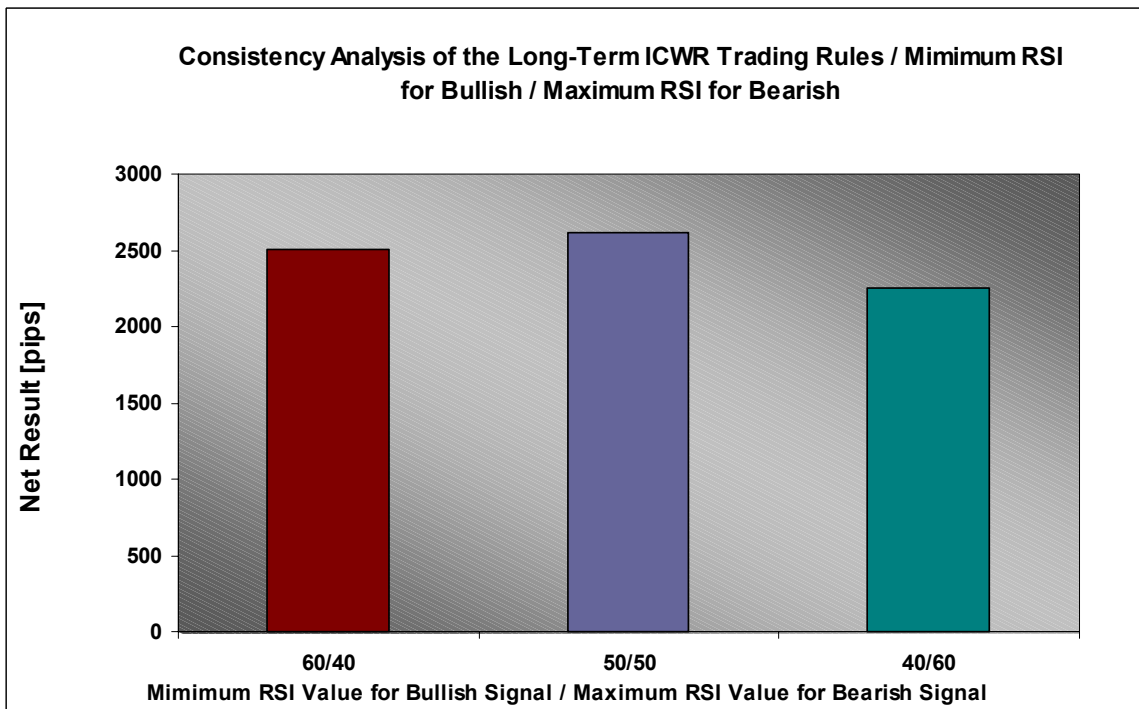


Figure 2.12.: Net result [pips] in dependence of the minimum/maximum RSI value for the market considered bullish/bearish for the **long-term** ICWR trading rules

2.4. Why is our entry strategy so profitable?

If you look at the entry signals that our strategy produces in Figure 2.13 you can see that our entry signals are able to predict the main direction that the market will take. This enables us to catch up a long-term intra-day wave after entering the market and therefore pick up a considerable number of pips.

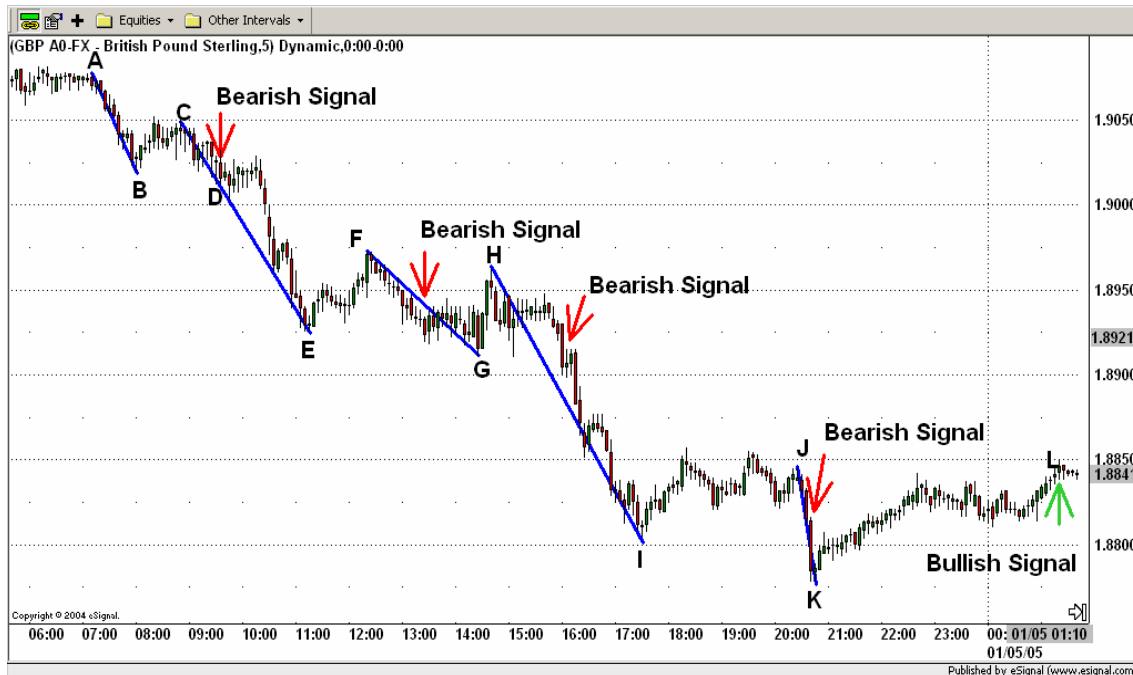


Figure 2.13.

Instead, if you look at the entry signals that would for example have been generated by a commonly used entry strategy, that is the crossing of the 20-period moving average with the 5-period moving average, one recognizes that a lot of the entry signals generated by MA crossings are of really poor quality, as they are not able to predict what will be the main market trend (see Figure 2.14).

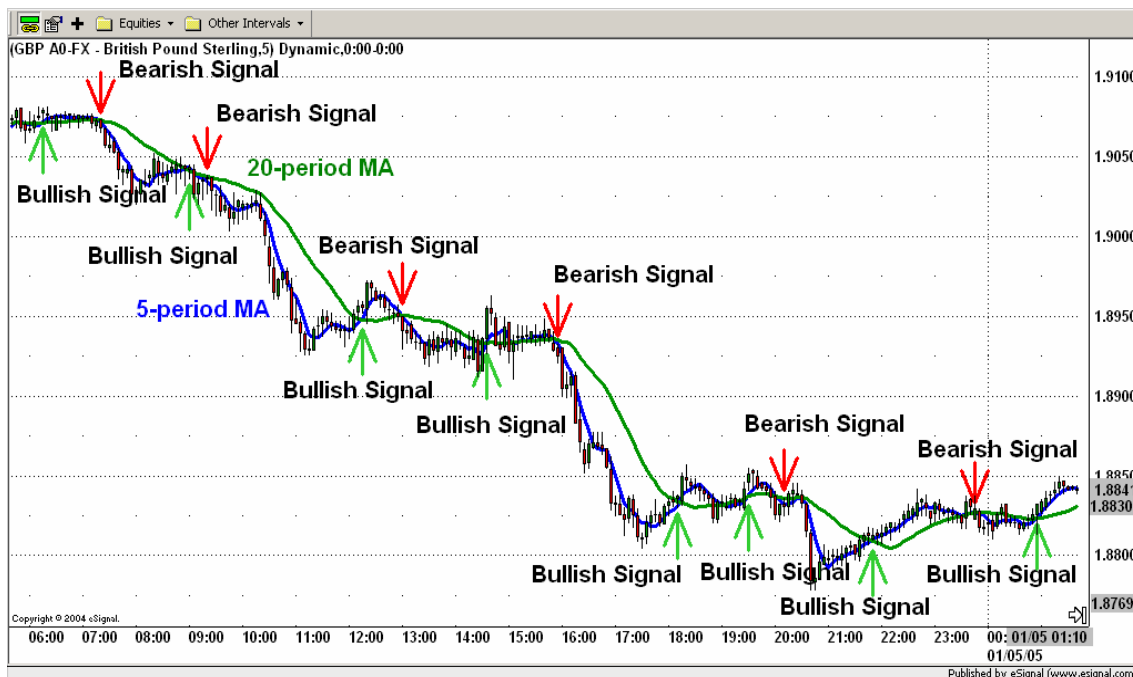


Figure 2.14.

2.5. Why is our exit strategy so profitable?

Most traders make a mistake by thinking that entering the trade is more important than exiting the trade, and if they have found an entry strategy with positive expectations, “the job is done”. Nothing could be further away from the truth. Exit strategy is equally if not more important than entry. In majority of strategies that are used by average traders a trailing stop is used. A trailing stop is definitely better than a hard stop, however our strategy goes way beyond regular trailing stops when determining the place of exit. Before we go on, for the ones not knowing the meaning of a trailing stop, we will show you what a trailing stop is and how it works.

A trailing stop order with a moving rate of 30 pips works as follows: suppose you are entering long a position at the closing price of 1.2456 at 10:10 AM (see Table 2.1). Using the above defined exit strategy you will then put your stop order at 1.2426 (30 pips below 1.2456). If the next closing price is at least 30 pips greater than the last stop order, the new stop order will be the new closing price minus 30 pips. For example at 10:15 AM the closing price of 1.2490 is 64 pips greater than the last trailing stop. Because of that the new trailing stop is set to be 1.2460 = 1.2490 – 0.0030. Also at 10:25 AM the closing price of 1.2495 is 35 pips greater than the last trailing stop. The new trailing stop is set to

be $1.2465 = 1.2495 - 0.0030$. In this example the position is exited at 10:30, because the low of that period of 1.259 is below the stop order of 1.2465.

Time	Low	Close	Old stop order	New stop order	Comment
10:10:00	1.2446	1.2456	-	1.2426	Entry position / Stop order at 1.2426
10:15:00	1.2464	1.2490	1.2426	1.2460	Stop order changed to 1.2460
10:20:00	1.2462	1.2483	1.2460	-	
10:25:00	1.2478	1.2495	1.2460	1.2465	Stop order changed to 1.2465
10:30:00	1.2459	1.2479	1.2465	-	Exit position / Low below 1.2465

Table 2.1.: Trailing stop with a moving rate of 30 pips

So what is the problem with the exit strategy shown above that uses a trailing stop?

The problem with an exit strategy using a trailing stop is that it works against the basic fundamental trading rule “cut the losses short and let the profits run”.

And if you use a strategy that doesn't let your profits run you are in real trouble.

And why does an exit strategy using a trailing stop work against this rule? Because very often such a strategy fails unnecessarily, it gets you out just at the moment when your trade needed just a little more space... Why? Every market trend, regardless of how strong it is, also shows movements against the long-term market trend. These deviations usually don't last very long and after them the market moves again in the direction of the long-term market trend.

We will now give you an example that will show you why a trailing stop is not the best exit strategy. This example is based on the same EUR/USD long-term trade example from chapter 7. Let's have a look at Figures 2.15 to 2.18. Suppose we entered the market long

at 16:00 on the 10/15/04 at the price of 1.2461 (see Figure 2.15) and also that we will be using a 150 pips trailing stop, which is an appropriate moving rate for long-term trading.



Figure 2.15.

At 04:00 on the 10/26/04 the closing price reached the price of 1.2802 (see Figure 2.16). That means according to the rules of a trailing stop, the new stop order is placed 150 pips below. That means at $1.2652 = 1.2802 - 0.0150$.



Figure 2.16.

At 12:00 on the 10/28/04 the candlestick touches the stop order and the position is exited at the price of 1.2652 (see Figure 2.17).



Figure 2.17.

The total profit of the trade using the 150 pips trailing stop was $1.2461 - 1.2652 = 191$ pips. Although we exited the position with profit (191 pips), we lost the chance of picking up the amount of pips that were possible in that trade.

How much profit was actually possible in that trade? As we will show you explicitly in chapter 7 we made in this trade a profit of 723 pips, when using our exit trading rules. In Figure 2.18 you can see both the profit gained by the 150 pips trailing stop (191 pips) and by our exit trading rules (723 pips), which are almost four times higher. Using a simple trailing stop is not only a pity for the lost pips (532 pips), but it is making trading in the long run unprofitable: two losses of 150 pips followed by a win of 191 pips result in net loss of 109 pips. In contrast two losses of 150 pips followed by a win of 723 pips result in a net win of 423 pips! Do you get the point?

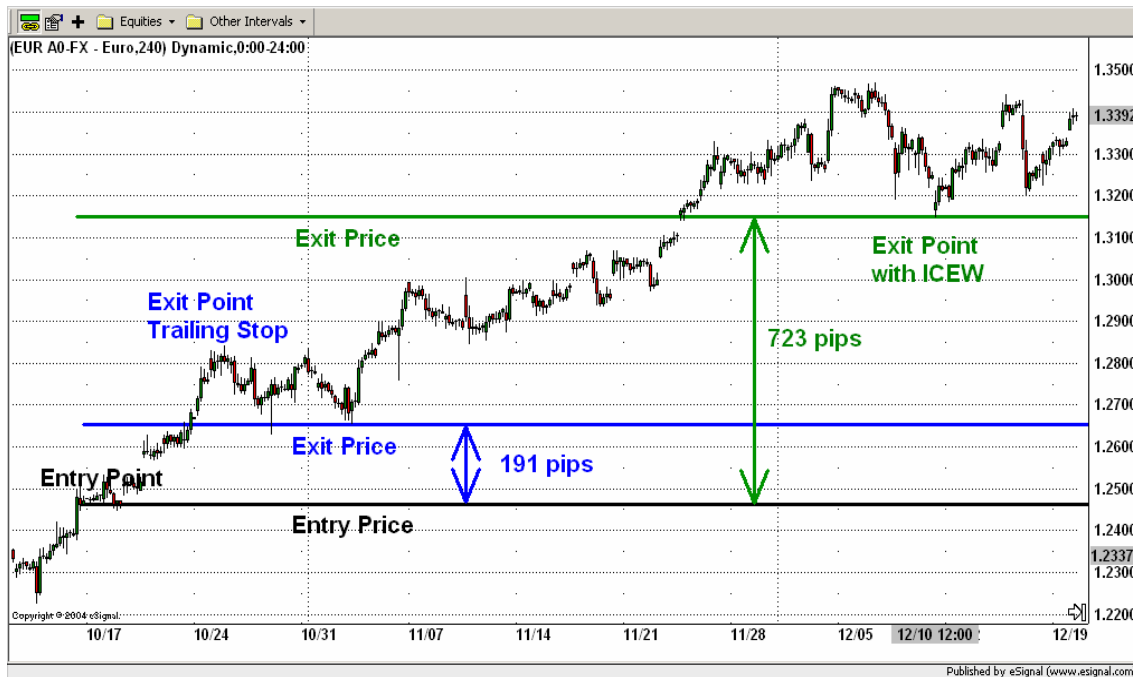
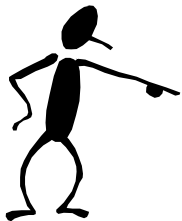
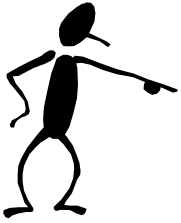


Figure 2.18.

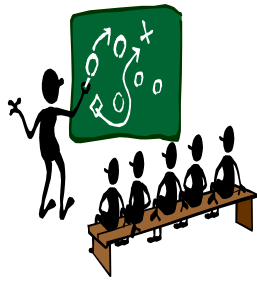
The basic error of the strategy with the trailing stop was, that although the market was clearly going in the direction of the trade (on the 10/26/04 a profit spread of almost 400 pips was already reached) the trailing stop didn't give the trade enough space to run. In particular if a profit spread of 400 pips was already reached it makes sense to risk, let's say 200 pips to give the trade a bigger chance to double or even triple the profit (at the end 723 pips were reached!).



Basically the greater the profit spread is the more pips we can risk, in order to gain even more. Again, one should not forget, that not every position will make profit and in order not only to come even with the losses but also to make considerable profit, one needs to milk every possible cent out of every profitable trade. This is where our strategy comes into play.



We hope you could get some impression of the research done behind our trading strategy. We understand that this chapter was complicated and maybe sometimes a little bit boring; however we had made it as short and concise as possible. If we had included all of the tests and calculations that were needed to produce the ICWR strategy we would had needed at least several hundred pages... In the next chapter you will be shown every aspect of ICWR strategy that you need to know in order to be able to implement it successfully. Thank you for your patience. 😊



Chapter 3

The Intraday ICWR Trading Rules

For the purpose of explaining our trading strategy we will be using Esignal charting software. Which software and which trading platform you will be using is entirely up to you, however our setup will give you a general idea of what capabilities should your software have. Our examples will deal with EUR/USD, USD/CAD and GBP/USD. Basically if you live in Canada we would encourage you to trade USD/CAD, if you live in Australia you should trade USD/AUD, if you live in East Asia you should trade USD/JPY, if you live in UK you should trade either USD/GBP or EUR/GBP, if you live in European Union you are best off trading EUR/USD and finally if you live in the United States you should trade USD against the currency that you are most familiar with. (EUR, JPY, GBP, CAD, SFR). Trading the currency that you are familiar with has lots of advantages vs. trading currencies that you have never used. For example, a person who lives in Canada remembers approximate range of CAD vs. USD during past ten years or more and has much better understanding of those currencies than average person from Japan. Principles and rules that are explained in this strategy can be used to trade any of the above currencies.

The Intraday ICWR Trading Rules are composed of:

- entry signals generated by impulsive/corrective wave retracement breakouts using a five minutes candlestick chart
- entry confirmation filters generated by a 1-day based 14-period Relative Strength Index (RSI) momentum indicator in order to confirm the bullish or bearish entry signal from the five minutes candlestick chart

- exit signals generated by impulsive/corrective wave retracement breakouts using a five minutes candlestick chart or by a hard stop order of 50 pips using a five minutes candlestick chart

As you can see our strategy places equal importance on entry and exit signals and this is where it greatly differs from most of the strategies out there. First of all we will show you how to recognize the market signals generated by impulsive/corrective wave retracements (see chapter 3.1). Then we will show you when to enter a trade using the market signals generated by impulsive/corrective wave retracements filtered with the 1-day based 14-period RSI momentum indicator (see chapter 3.2). Finally we will show you when to exit a trade due to either an exit signal generated by an impulsive/corrective wave retracement or by a hard stop order of 50 pips (see chapter 3.3).

3.1. Market signals generated by ICWR

Before starting to apply the Intraday ICWR Trading Rules, the first thing to do is to recognize from the candlestick chart the actual candidate for being an impulsive or a corrective wave. This candidate we will call from now on the **active wave**. How to recognize the active wave from the candlestick chart is shown in chapter 3.1.1.

After having recognized the active wave we apply the Intraday ICWR Trading Rules. Based on these rules our strategy generates bullish or bearish signals that can be used for entering as well as exiting the trade either on a long or a short side. How to apply the Intraday ICWR Trading Rules once an active wave is recognized is shown in chapter 3.1.2.

3.1.1. Recognition of the active wave

The active wave is the nearest market movement to the actual time of our trading with a **height greater than 40 pips**. In order to find the active wave from the candlestick chart the following steps are to be done:

First identify all possible upward and downward waves that seem to be close to or greater than 40 pips on the candlestick chart as shown in Figure 3.1.



Figure 3.1.

Then draw the waves, connecting the extreme values of the starting and the ending point as shown in Figure 3.2. If the wave goes downwards we are going to connect the high value of the starting point with the low value of the ending point. Else if the wave goes upwards we are going to connect the low value of the starting point with the high value of the ending point.



Figure 3.2.

Enumerate the waves starting with the nearest wave to the actual time as shown in Figure 3.3. Please notice that the actual time is always at the right of the candlestick chart.



Figure 3.3.

Afterwards read the extreme values of each wave and calculate its height.

Wave 1:

High = 1.3493; Low = 1.3439;

Height = High – Low = 1.3493– 1.3439= 0.0054 = 54 pips

Wave 2:

High = 1.3495; Low = 1.3448;

Height = High – Low = 1. 3495– 1. 3448= 0.0047 = 47 pips

Wave 3:

High = 1.3499; Low = 1.3450;

Height = High – Low = 1. 3499– 1. 3450= 0.0049 = 49 pips

Finally identify the nearest movement to the actual time position with a height equal or greater than 40 pips. In this example it is the wave 1. This is now the active wave (see Figure 3.4).

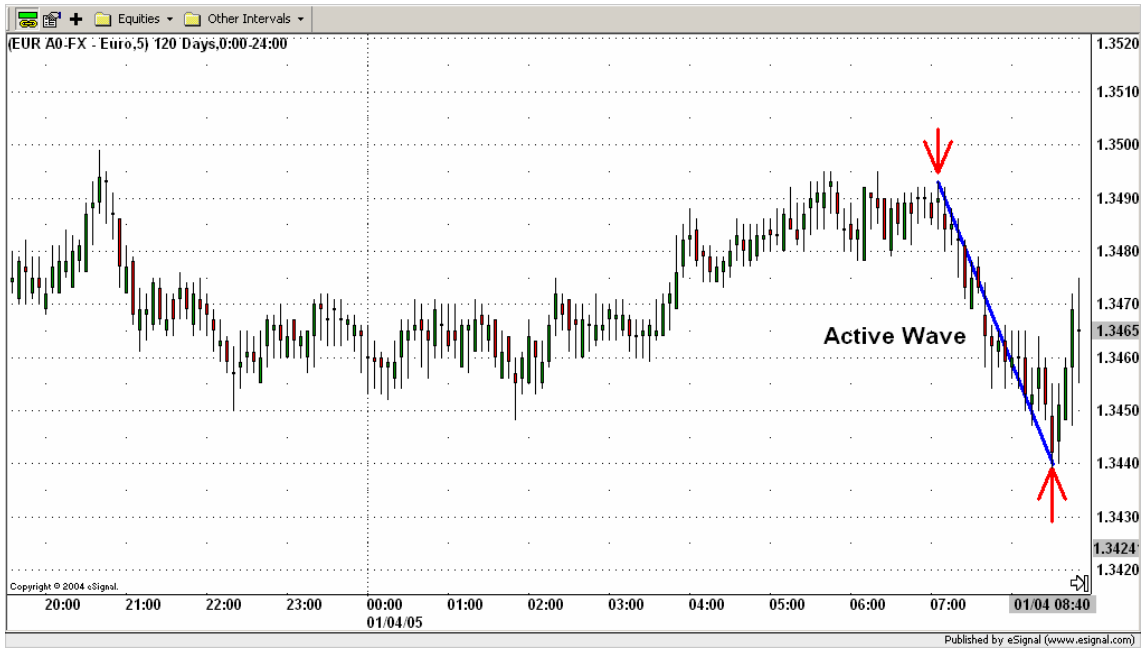


Figure 3.4.

If none of the waves has a height greater than 40 pips you have to go further in the past until the active wave is found.

As the time goes on a new movement with a height greater than 40 pips will occur. In that case the previous active wave gets inactive, and we get the new active wave (see Figure 3.5).

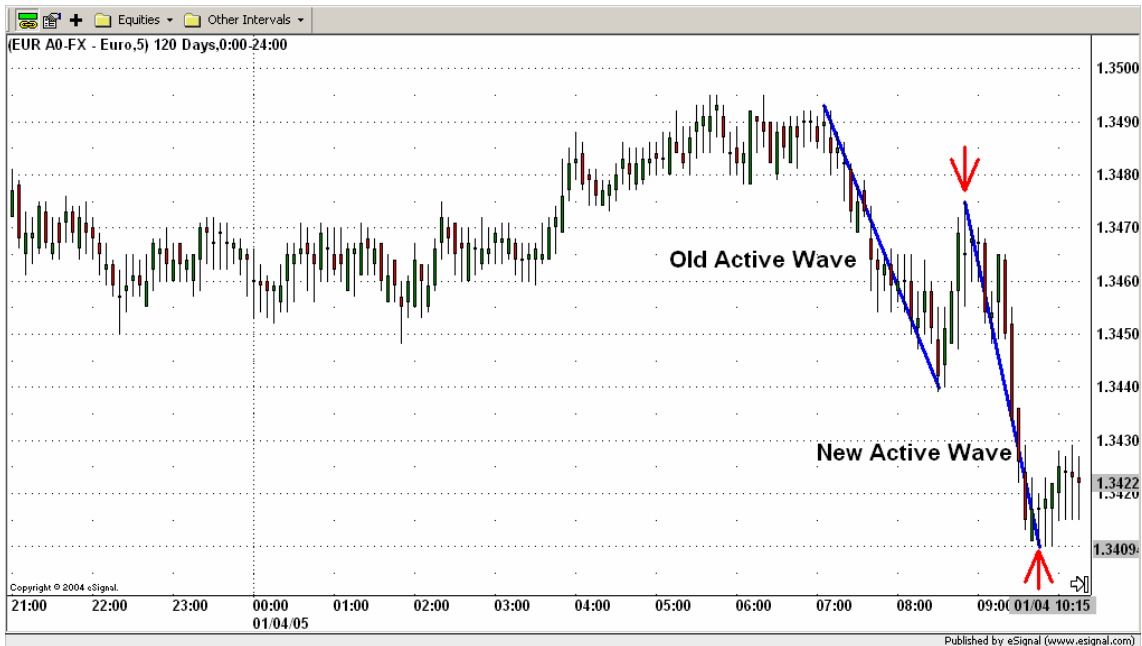


Figure 3.5.

3.1.2. Applying the Intraday ICWR Trading Rules to an active wave

Every time a new active wave is recognized the Fibonacci levels are to be drawn (see Figure 3.6). We will draw only the 0.000, 0.250, 0.382, 0.618, 0.750 and 1.000 levels. The level 0.000 is defined by the lower extreme value, the level 1.000 by the higher extreme value. The Fibonacci levels start at the ending points of the wave. Most of the software packages will do this automatically for you, however if your software doesn't have such a feature you can do it manually. In the example below you would subtract the low value from the high value (1.3317 – 1.3257) and you would get a height of 0.006 or 60 pips. You would then use the following formulas to get the Fibonacci levels.

$$0.25 \text{ Level} = \text{Low Value} + 0.25 * \text{Height}$$

$$0.25 \text{ Level} = 1.3257 + 0.25 * 0.0060 = 1.3272$$

$$0.382 \text{ Level} = \text{Low Value} + 0.382 * \text{Height}$$

$$0.618 \text{ Level} = \text{Low Value} + 0.618 * \text{Height}$$

$$0.75 \text{ Level} = \text{Low Value} + 0.75 * \text{Height}$$



Figure 3.6.

The level 0.382 defines the **lower retracement level**, the level 0.618 the **upper retracement level**. The **retracement channel** is the channel between the upper and the lower retracement levels:

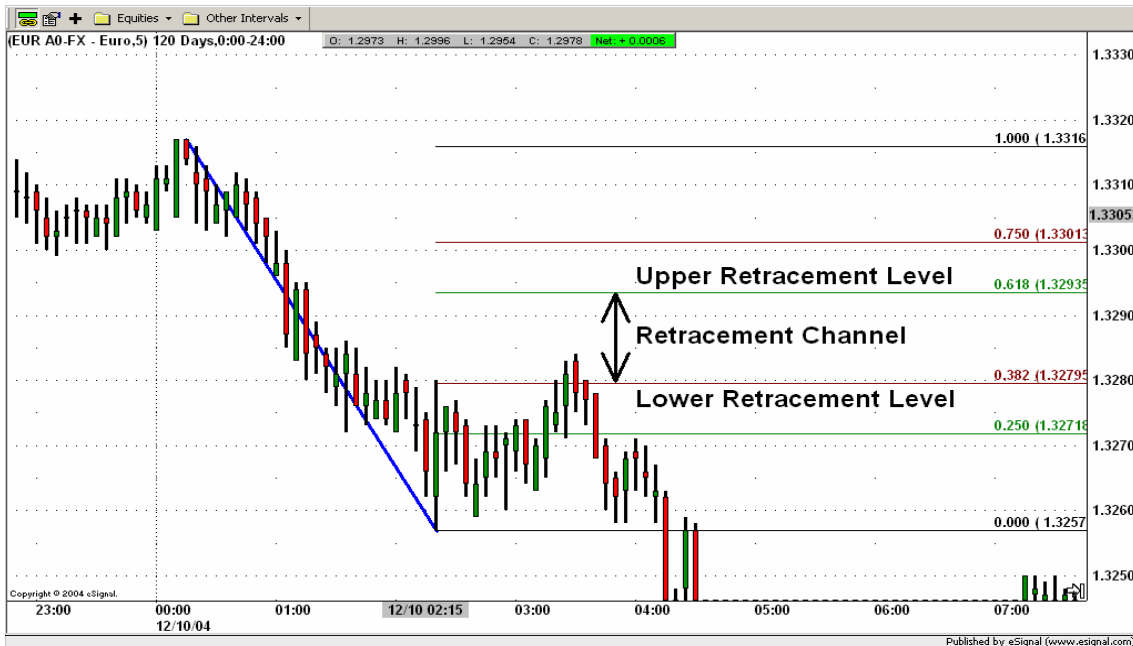


Figure 3.7.

The level 0.250 defines the **lower confirmation level**, the level 0.750 defines the **upper confirmation level**:



Figure 3.8.

The levels 0.000 and 1.000 have no trading relevance. They are only drawn for confirming that the Fibonacci levels are drawn properly.

The Intraday ICWR Trading settings are done, now we need to see what the market is telling us. First we will concentrate only on the retracement channel. We wait until the retracement channel is triggered. Only then we can use the confirmation levels.

The retracement channel is triggered when the closing price of a candlestick is inside of the retracement channel.

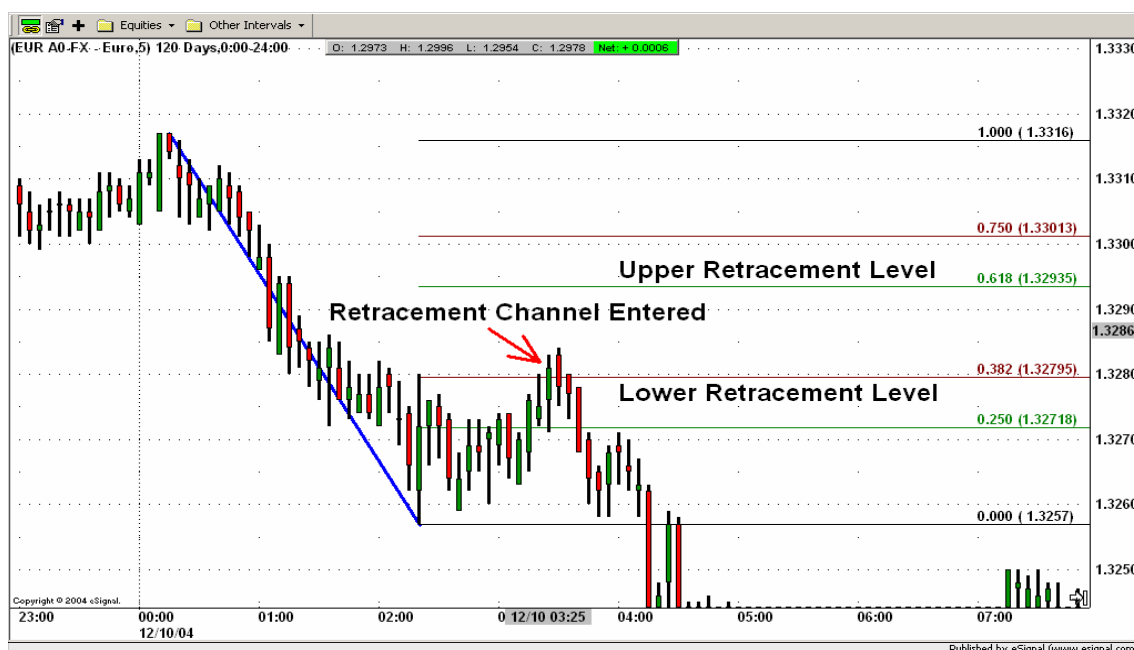


Figure 3.9.

Once the retracement channel is entered we will forget about it and concentrate only on the confirmation levels. The following four cases are now possible:

Case 1. “Downward impulsive wave”

If the active wave goes **downwards** and the **whole** candlestick goes below the lower confirmation level (0.250) we identify that wave as an impulsive wave. According to the chapter 1 the impulsive waves go in the direction of the market trend. As the trend of the wave is bearish (as it goes downwards) it is giving us the information that the actual market trend is also bearish. This is a **bearish** signal. Such a bearish signal is shown in the Figure 3.10. below.



Figure 3.10.

Please remember that when we say that the candlestick is below the lower confirmation level, we actually mean that the **whole** candlestick is below the lower confirmation level. This is shown in the Figure 3.11. below.

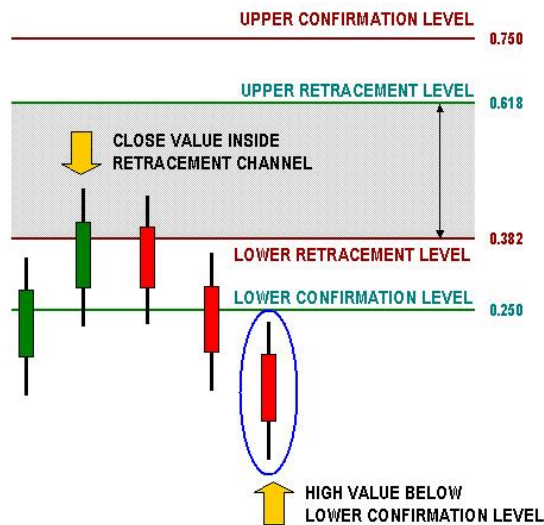


Figure 3.11.

Case 2 “Upwards impulsive wave”

If the active wave goes **upwards** and the **whole** candlestick goes above the upper confirmation level (0.750) we identify that wave again as an impulsive wave. According to the chapter 1 the impulsive waves go in the direction of the market trend. As in this

case the trend of the wave is bullish (as it goes upwards) it is giving us the information that the actual market trend is also bullish. This is a **bullish** signal.

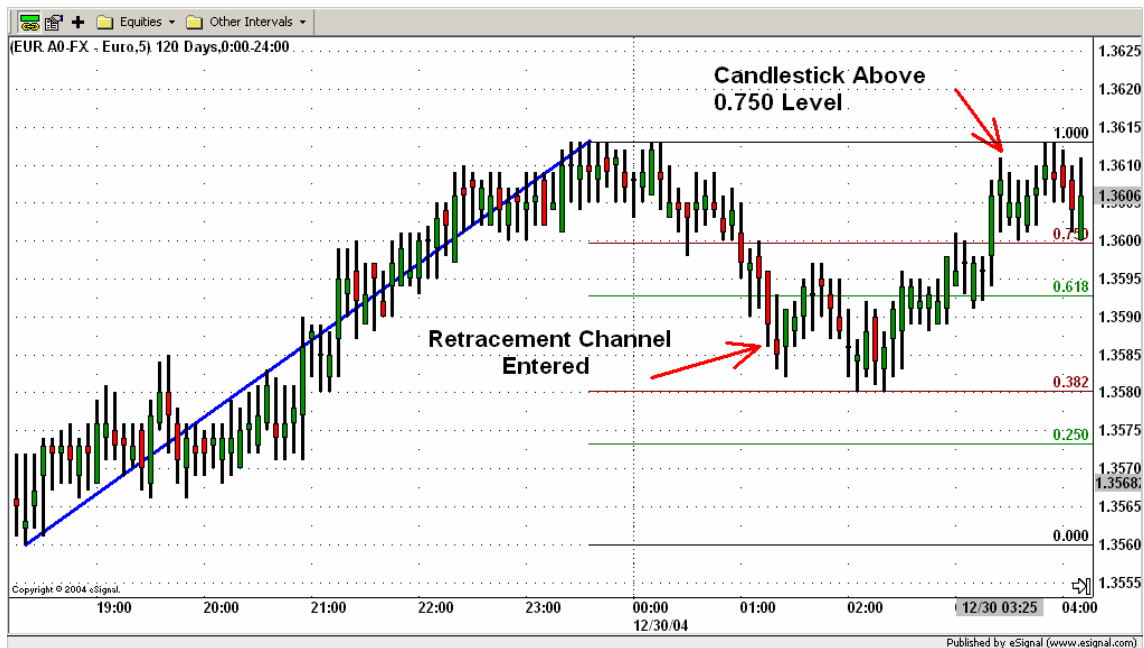


Figure 3.12.

Case 3 “Downwards corrective wave”

If the active wave goes **downwards** and the **whole** candlestick goes above the upper confirmation level (0.750) the active wave is a corrective wave. According to the chapter 1 the corrective waves go against the direction of the market trend. As in this case the trend of the wave is bearish (as it goes downwards) it is giving us the information that the actual market trend is opposite to the trend of the active wave and therefore bullish. This is a **bullish** signal. Such a bullish signal is shown in the Figure 3.13. below.

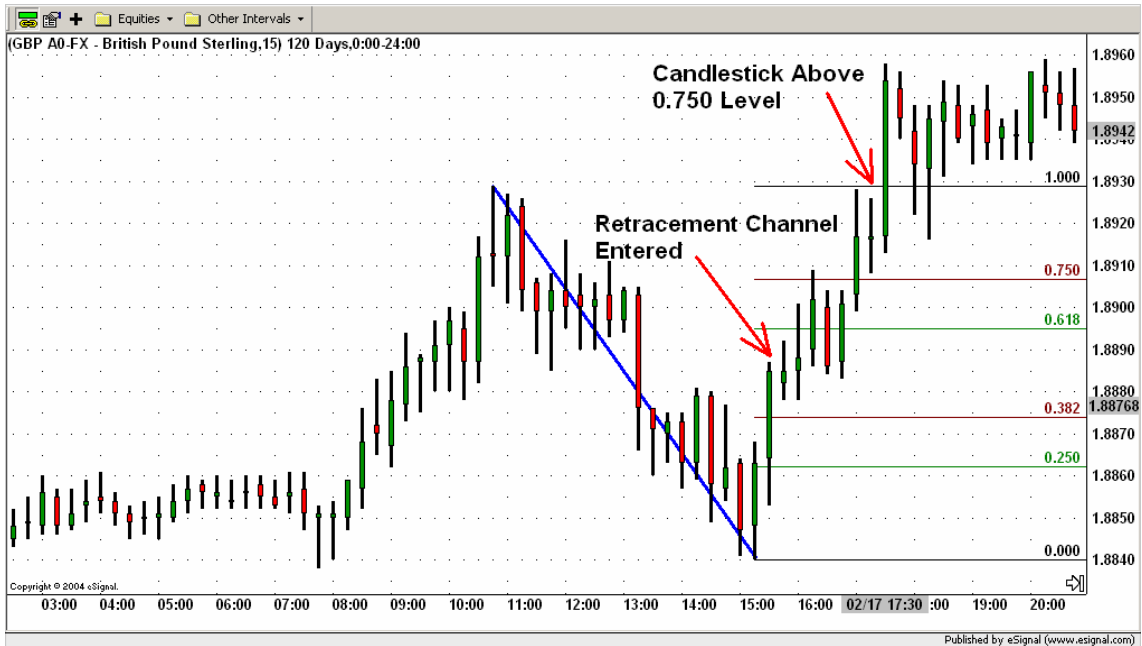


Figure 3.13.

Case 4 “Upwards corrective wave”

If the active wave goes **upwards** and the **whole** candlestick goes below the lower confirmation level (0.250) the active wave is a corrective wave. According to the chapter 1 the corrective waves go against the direction of the market trend. As in this case the trend of the wave is bullish (as it goes upwards) it is giving us the information that the actual market trend is opposite to the trend of the active wave and therefore bearish. This is a **bearish** signal.

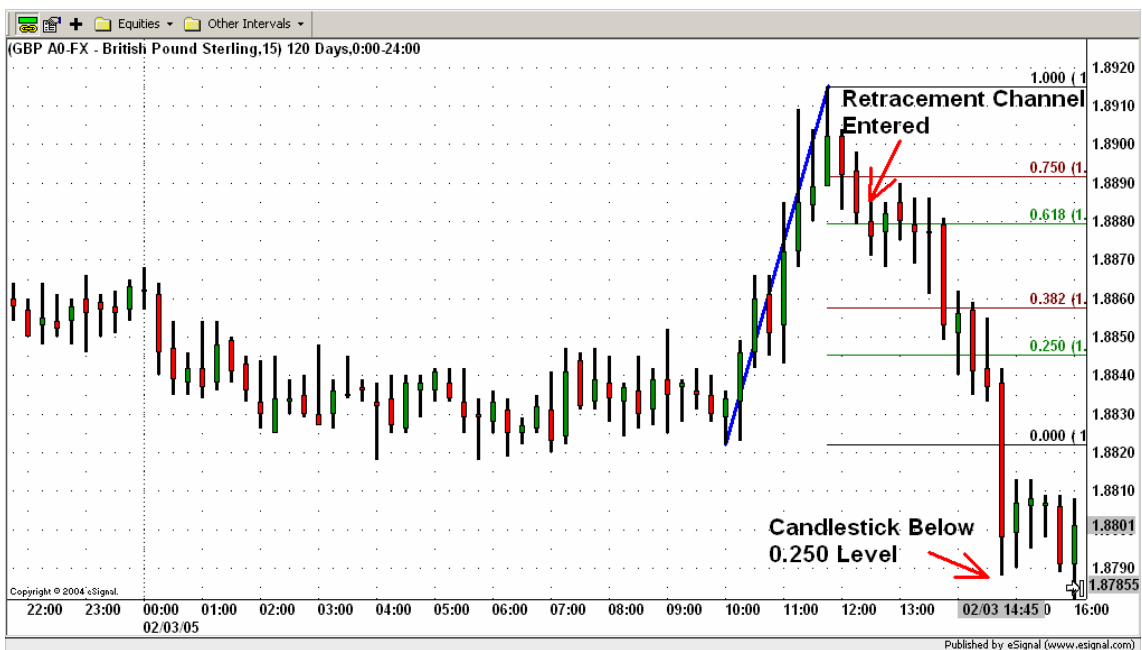
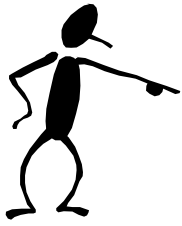


Figure 3.14.



Ok, we know this stuff is a little bit complicated. But don't be discouraged! Things, will become more clear for you now. We will now explain to you again in the most simplest manner the rules for recognizing bearish or bullish signals. That means, what in the end you have **really** to understand for trading.

In our strategy there are two different bullish signal scenarios and two bearish signal scenarios.

A **bullish** signal occurs if the active wave is recognized as a **downward corrective wave** (see Figure 3.15. below). That means the active wave was downward and the whole candlestick was found above the upper confirmation level (0.750).

A **bullish** signal also occurs if the active wave is recognized as an **upward impulsive wave** (see Figure 3.15. below). That means the active wave was upward and the whole candlestick was found above the upper confirmation level (0.750).

A **bearish** signal occurs if the active wave is recognized as a **downward impulsive wave** (see Figure 3.15. below). That means the active wave was downward and the whole candlestick was found below the lower confirmation level (0.250).

A **bearish** signal also occurs if the active wave is recognized as an **upward corrective wave** (see Figure 3.15. below). That means the active wave was upward and the whole candlestick was found below the lower confirmation level (0.250).

Please note that each time we need to make sure that the retracement channel has been entered. This is quite obvious for the corrective waves but not for the impulsive waves. So please pay attention to it.

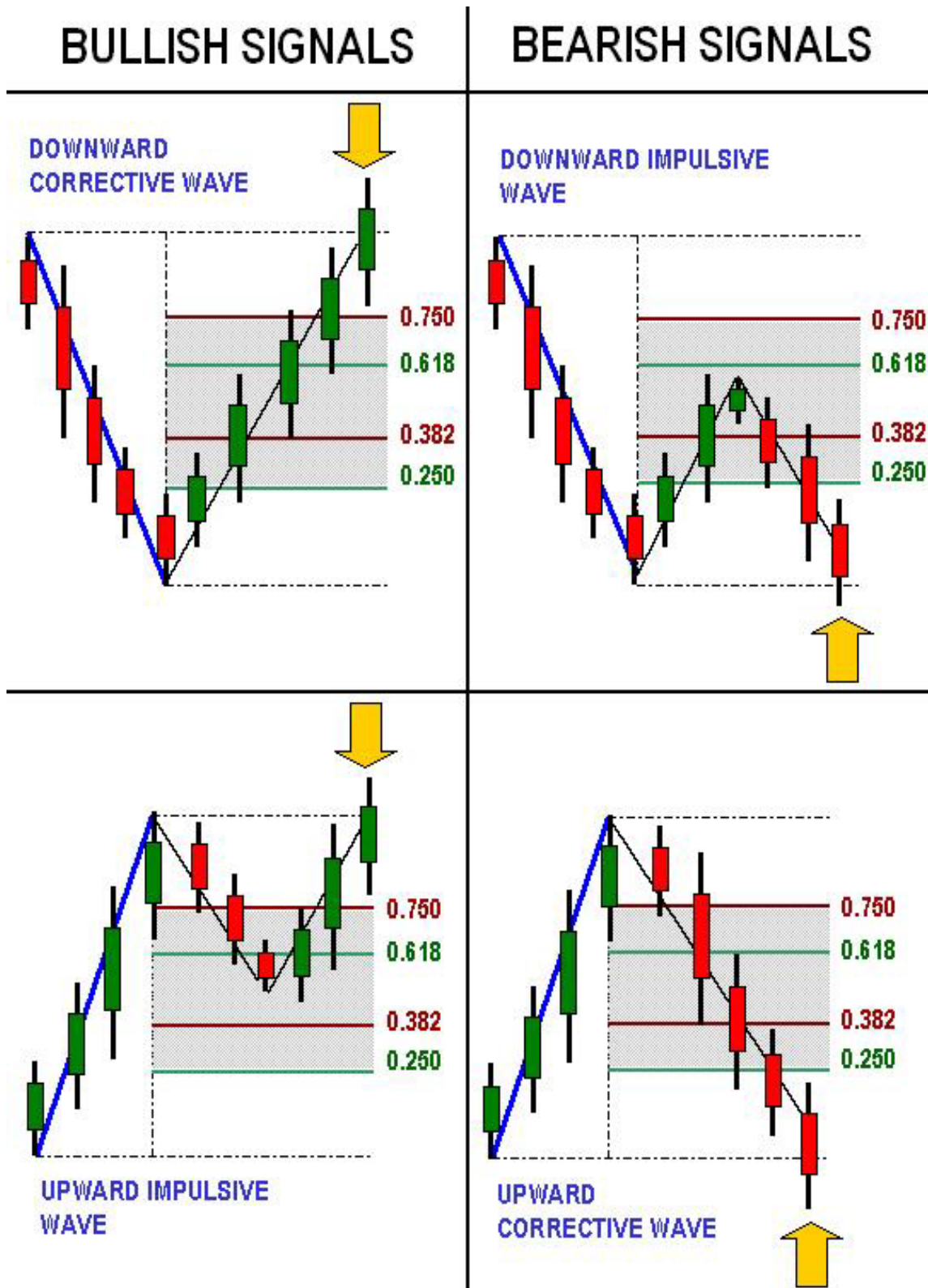


Figure 3.15.

Please note as shown in the Figure 3.16. below that, when a new active wave is recognized, the new Fibonacci levels are drawn and the existent Fibonacci levels of the previous active wave are deleted.

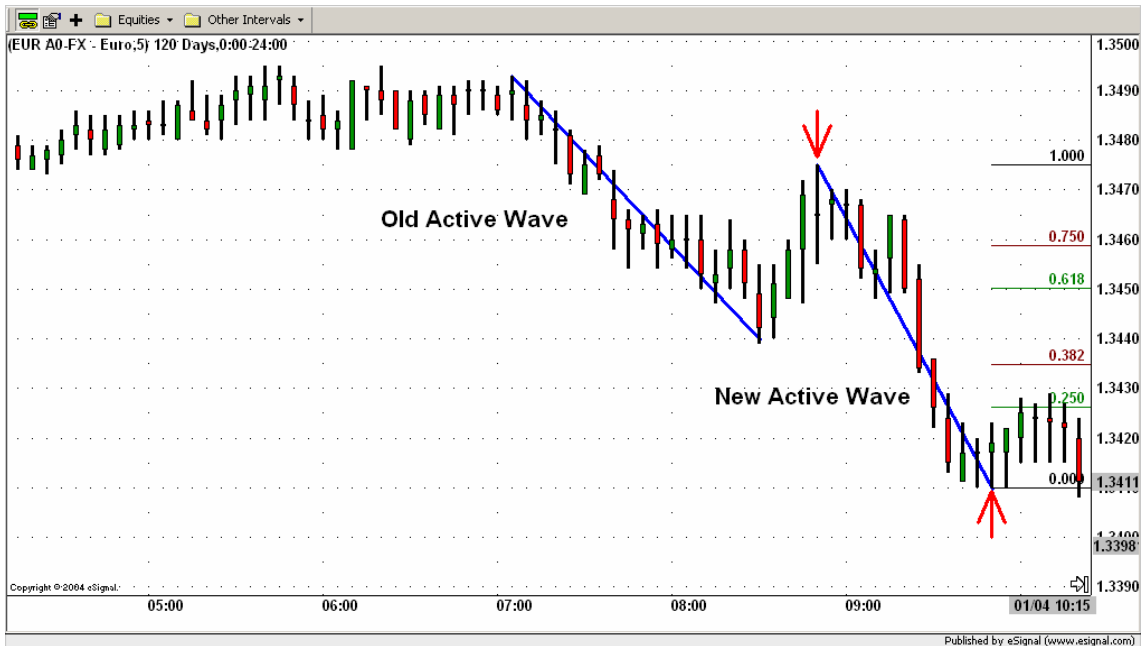


Figure 3.16.

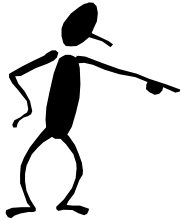
In the Figure 3.17. shown below you can observe how the market is constantly providing us with different trading signals.



Figure 3.17.

3.2. When to enter a trade

In short, we are going to enter a trade, when a signal generated by an impulsive/corrective wave retracement (as shown in chapter 3.1) is confirmed by the 1-day 14-period Relative Strength Index.



If the signal generated by an impulsive/corrective wave retracement is bullish we ask for the RSI to be greater than 50.

If the signal generated by an impulsive/corrective wave retracement is bearish we ask for the RSI to be lower than 50.

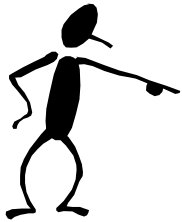
In the Figure 3.18. below we can see the two screen set up. On the left side there is a 5 minutes candlestick chart. On the right side there is 1-day candlestick chart with the RSI signal below. At 11:30 on the 11/23/04 the candlestick is above the upper confirmation level (Fibonacci level 0.750). Since the active wave had a downward movement and the candlestick is above the upper confirmation level we identify the active wave as a downward corrective wave. As explained before this is an ICWR bullish signal. This bullish signal must be confirmed with the Relative Strength Index (RSI). As the RSI (blue line in Figure 3.18) is above the 50 centerline (black line) we enter long the market.



Figure 3.18.

3.3. When to exit a trade

Our **main** exit strategy is to look for an opposite market signal (opposite to our entry signal) based on impulsive/corrective wave retracements (in the same manner as for the entry warning signal). Additionally (**only** for the sake of **security**) after entering a position we place a stop order of 50 pips, because we do not want to lose more than 50 pips in one trade.



If the market was entered long a position will be exited either because a bearish signal is generated by an impulsive/corrective wave retracement (as shown in chapter 3.1) or because of the hard stop order of 50 pips below the entry price.

If the market was entered short a position will be exited either because a bullish signal is generated by an impulsive/corrective wave retracement (as shown in chapter 3.1) or because of the hard stop order of 50 pips above the entry price.

In the Figure 3.19. below the market was entered short as **both** the signals generated by an impulsive/corrective wave retracement (ICWR) and the RSI were bearish. The position was entered at 08:20 on the 09/29/04 at the price of 1.8091. Immediately after entering the position a hard stop order of 50 pips above the entry price (in this case at $1.8091 + 0.0050 = 1.8141$) is placed. In this trade the stop order is not triggered. The position is exited because a bullish signal is generated by an impulsive/corrective wave retracement (ICWR) at 13:45 on the 09/30/04.

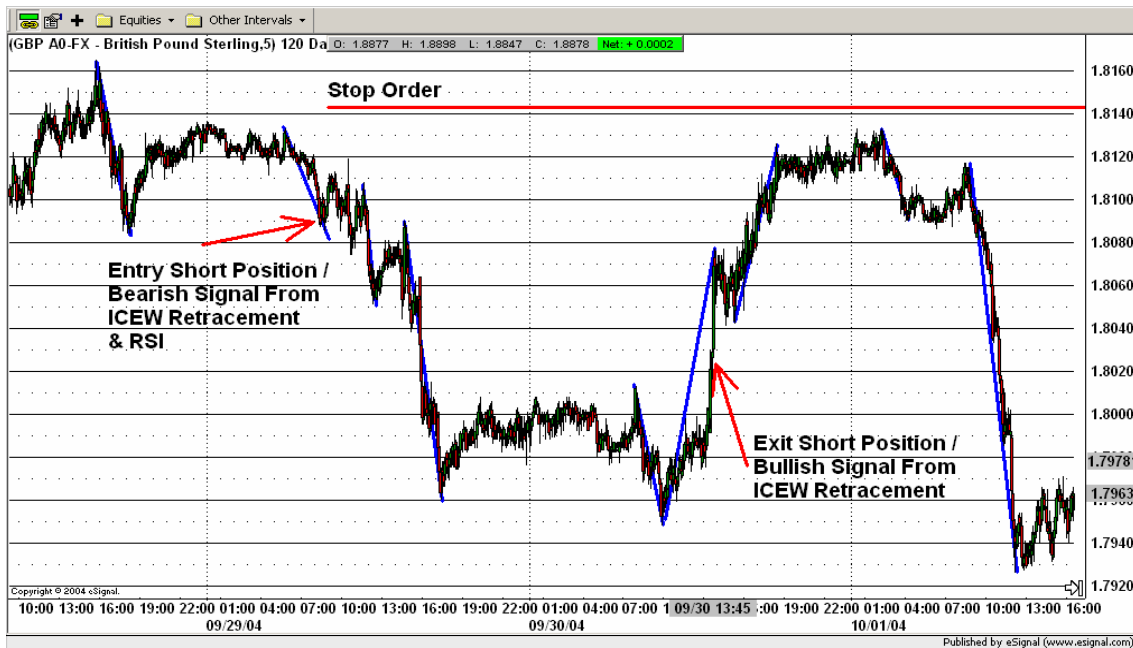
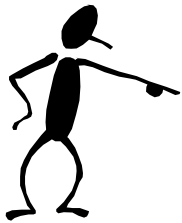


Figure 3.19.



In this chapter you were introduced to our “Intraday ICWR Trading Rules”. Now it’s time to go step by step through real trading examples using our strategy so that you can see our “Intraday ICWR Trading Rules” in action.



Chapter 4

Intraday EUR/USD Trading Example

In this example we are going to trade EUR/USD.

Ok, before we start our trading day we need to set up our screens (see Figure 4.1). On the left screen we are going to place a five minutes candlestick chart and on the right screen a one day candlestick chart together with the 14-period RSI (thick blue line). The charting software usually pictures the RSI automatically together with the 30 and 70 lines (below 30 represents oversold, above 70 overbought). In our case we are not looking for oversold or overbought signals. We are looking for the market being bullish or bearish. This is represented by RSI being above 50 (bullish) or below 50 (bearish). So we only need to draw the 50 centerline (black line).



Figure 4.1.

Now we are ready to start. Suppose you started your trading day on the 11/23/04 at 08:00. At that time the price was 1.2995. As you can see from the right screen the RSI is above 50 and therefore bullish. So we are looking for a bullish signal for entering long the market.



Figure 4.2.

Next thing to do is to recognize the active wave. For that, we are going to look for the nearest market movement to our starting position with a height greater than 40 pips.

Ok, in order to find the active wave the following steps are to be done:

First all possible waves (black lines) are drawn connecting the high value of the starting point with the low value of the ending point and then the waves are enumerated starting with the nearest wave to the actual time (see Figure 4.3).



Figure 4.3.

Second read the extreme values of each wave and calculate its height.

Wave 1:

High = 1.3005; Low = 1.2986;

Height = High – Low = 1.3005 – 1.2986 = 0.0019 = 19 pips

Wave 2:

High = 1.3002; Low = 1.2986;

Height = High – Low = 1.3002 – 1.2986 = 0.0016 = 16 pips

Wave 3:

High = 1.3002; Low = 1.2971;

Height = High – Low = 1.3002 – 1.2971 = 0.0031 = 31 pips

Wave 4:

High = 1.3039; Low = 1.2971;

Height = High – Low = 1.3039 – 1.2971 = 0.0068 = 68 pips

The nearest movement to our starting position with a height greater than 40 pips is the wave 4. So that's our active wave now. The other movements had all a height below 40 pips and therefore are not taken into consideration (throughout our trading we are not going to pay attention to such movements).

The wave 4 is now our current active wave (see blue line in Figure 4.4).



Figure 4.4.

The task is now to apply the Intraday ICWR Trading Rules.

That means, first the Fibonacci levels 0.000, 0.250, 0.382, 0.682, 0.750 and 1.000 are inserted using the low as the starting point (level 0.000) and the high as the ending point (level 1.000). The levels between 0.382 and 0.618 define the retracement channel. The levels 0.250 and 0.750 define the confirmation levels. See Figure 4.5.



Figure 4.5.

Ok, the Fibonacci levels are placed, now it's about to see what the market is telling us

At 11:30 on the 11/23/04 the candlestick is above the upper confirmation level (Fibonacci level 0.750). Since the active wave had a downward movement and the candlestick is above the upper confirmation level we identify the active wave as a downward corrective wave. As explained in the chapter 3. "Intraday ICWR Trading Rules" this is a bullish signal. See Figure 4.6.



Figure 4.6.

This bullish signal must be confirmed with the Relative Strength Index (RSI). If the RSI is greater than 50, it's bullish and we enter the market. If RSI is less than 50, it's bearish, so it's opposite and we do not enter the market. The RSI (blue line in Figure 4.7) is above the 50 centerline (black line) and therefore bullish.



Figure 4.7.

As **both** signals are bullish we enter the trade at 11:30 on the 11/23/04 at the price of 1.3032 (see Figure 4.8). For example we sell 10,000 USD for the price of 1.3032.



Figure 4.8.

Ok, now it's about to find how far we will let the market move before we exit our position.

First of all we place a stop order 50 pips below the entry price. That means at $1.3032 - 0.0050 = 1.2982$. It's represented by the thick red horizontal line in the picture below (Figure 4.9). Please notice, as said before, that the hard stop order is only for the sake of security, because we do not want to lose more than 50 pips in one trade.



Figure 4.9.

In fact, our **main** exit strategy is to look for an opposite signal generated by an impulsive/corrective wave retracement (in the same manner as for the entry warning signal).

In this example we are looking for a bearish signal as we entered long the market. The task is to look for a whole candlestick being below the lower confirmation level (after having entered the retracement channel in the case of an impulsive wave). If this happens we exit the position. Every time a new wave is recognized, new Fibonacci levels are drawn and the old Fibonacci levels get inactive. This procedure is repeated until an exit signal occurs.

Ok, let's look to our opened position at 11:30. Between 11:30 and 13:00 no bearish signal occurs. So, we don't exit the trade.

Remember the bearish signal is in this example the exit signal.

Around 13:00 we recognize a new active wave represented by the upward movement starting at 10:55 and ending at 12:00 on the 11/23/04. The beginning and the end of the new active wave are marked with red arrows in Figure 4.10.



Figure 4.10.

New Fibonacci levels are drawn . The old ones are now inactive (see Figure 4.11).



Figure 4.11.

For this active wave no exit signal occurs. Instead around 14:00 we recognize a new active wave represented by the upward movement starting at 13:05 and ending at 13:40 on the 11/23/04. See Figure 4.12.



Figure 4.12.

New Fibonacci levels are drawn and the old ones removed (see Figure 4.13). Now we are again looking for a candlestick going below the lower confirmation level.



Figure 4.13.

Once again around 12:00 on the 11/24/04 a new active has been recognized before an exit signal occurs. The new active wave is represented by the upward movement starting at 08:20 and ending at 11:35 on the 11/24/04. See Figure 4.14.



Figure 4.14.

New Fibonacci levels are drawn and the old ones removed (see Figure 4.15).



Figure 4.15.

This happens now several times.

Around 13:00 on the day 11/25/04 a new active wave has been recognized before an exit signal occurs. The new active wave is represented by the upward movement starting at 11:10 and ending at 12:35 on the 11/25/04. See Figure 4.16.



Figure 4.16.

New Fibonacci levels are drawn and the old ones removed (see Figure 4.17).

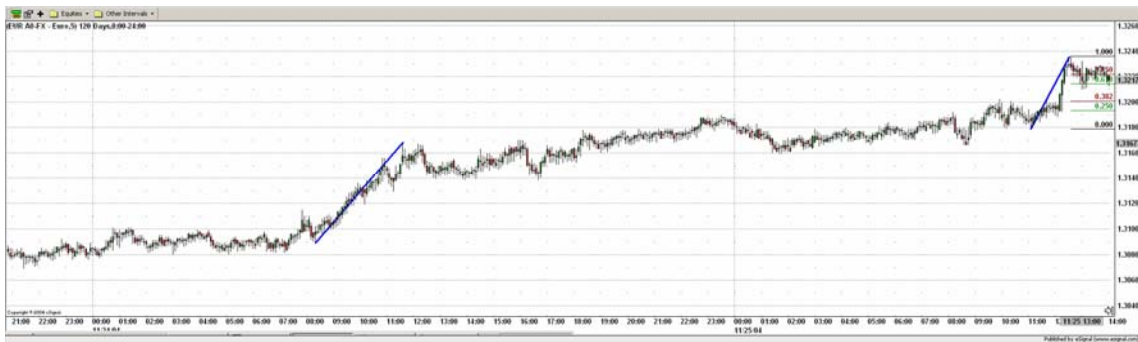


Figure 4.17.

Again around 18:00 on the day 11/25/04 a new active wave has been recognized before an exit signal occurs. The new active wave is represented by the upward movement starting at 15:00 and ending at 16:50 on the 11/25/04. See Figure 4.18.



Figure 4.18.

New Fibonacci levels are drawn and old ones removed (see Figure 4.19).



Figure 4.19.

Once again around 00:00 on the day 11/26/04 a new wave has been recognized before an exit signal occurs. The new active wave is represented by the upward movement starting at 20:00 and ending at 22:55 on the 11/25/04. See Figure 4.20.



Figure 4.20.

New Fibonacci levels are drawn and old ones removed (see Figure 4.21).



Figure 4.21.

Again around 07:30 on the day 11/26/04 a new wave has been recognized before an exit signal occurs. The new active wave is represented by the upward movement starting at 02:40 and ending at 07:15 on the 11/26/04. See Figure 4.22.



Figure 4.22.

New Fibonacci levels are drawn and the old ones removed (see Figure 4.23).



Figure 4.23.

Again around 08:15 on the day 11/26/04 a new wave has been recognized before an exit signal occurs. The new active wave is represented by the upward movement starting at 07:20 and ending at 08:05 on the 11/26/04. See Figure 4.24.



Figure 4.24.

New Fibonacci levels are drawn and the old ones removed (see Figure 4.25).



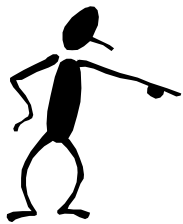
Figure 4.25.

Around 08:30 the market trend starts to reverse (see Figure 4.26.). At 09:00 on the 11/26/04 the candlestick is below the lower confirmation level (Fibonacci level 0.250). Since the active wave had a **downward** movement and the candlestick is below the lower confirmation level we identify the active wave as a downward impulsive wave. As explained in the chapter 3. “Intraday ICWR Trading Rules” this is a bearish signal. Please, notice that for the recognition of an impulsive wave it’s important that the retracement channel is crossed. This occurred at 08:30 as the closing price was then inside of the retracement channel.



Figure 4.26.

Because of the bearish signal the position is exited at 09:00 on the 11/26/04 buying 10,000 USD for the price of 1.3280.



At the end using the Intraday ICWR Trading Rules a profit of 248 pips = $(1.3280 - 1.3032) = 0.0248$ was achieved (see Figure 4.27).

Using a 1:20 leverage this means

10,000 USD x (0.0248 pips) x 20 leverage = 4,960 USD!

A profit of 4,960 USD for three trading days using the Intraday ICWR Trading Rules!

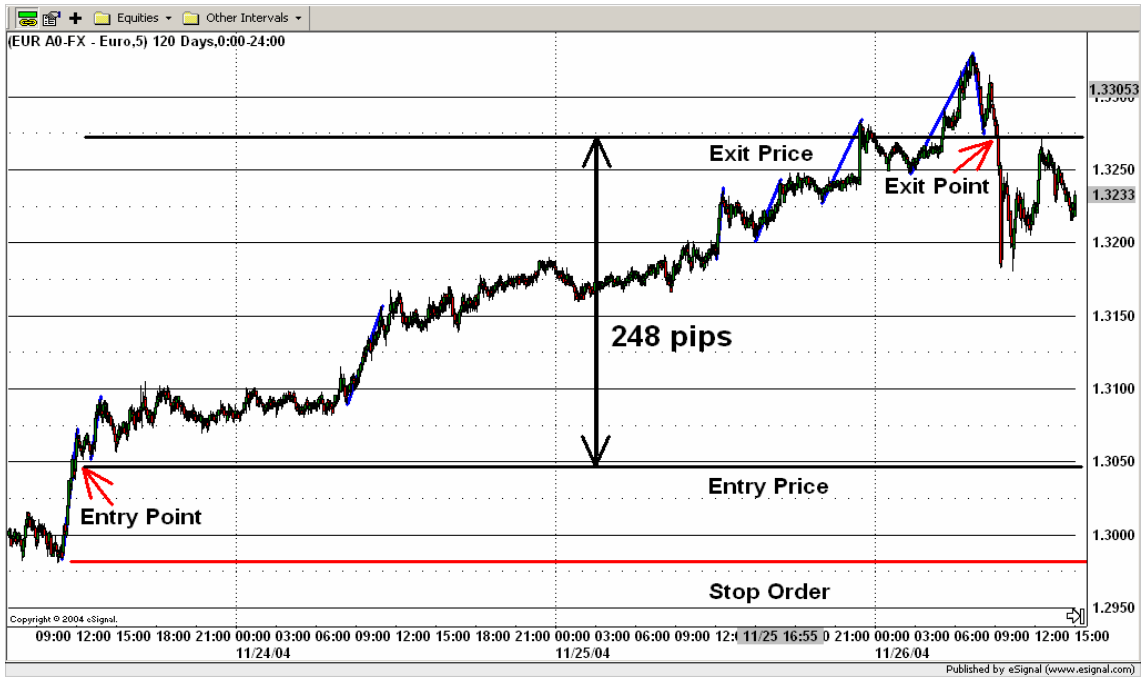


Figure 4.27.



Chapter 5

Intraday CAD /USD

Trading Example

In this example we are going to trade CAD/USD.

Ok, before we start our trading day we need to set up our screens (see Figure 5.1). On the left screen we are going to place a five minutes candlestick chart and on the right screen a one day candlestick chart together with the 14-period RSI (thick blue line). The charting software usually pictures the RSI automatically together with the 30 and 70 lines (below 30 represents oversold, above 70 overbought). In our case we are not looking for oversold or overbought signals. We are looking for the market being bullish or bearish. This is represented by RSI being above 50 (bullish) or below 50 (bearish). So we only need to draw the 50 centerline (black line).



Figure 5.1.

Now we are ready to start. Suppose you started your trading day on the 11/03/04 at 08:00. At that time the price was 1.2247. As you can see from the right screen the RSI is below 50 and therefore bearish. So we are looking for a bearish signal for entering short the market.



Figure 5.2.

Next thing to do is to recognize the active wave. For that, we are going to look for the nearest market movement to our starting position with a height greater than 40 pips.

Ok, in order to find the active wave the following steps are to be done:

First all possible waves (black lines) are drawn connecting the high value of the starting point with the low value of the ending point and then the waves are enumerated starting with the nearest wave to the actual time (see Figure 5.3).



Figure 5.3.

Second read the extreme values of each wave and calculate its height.

Wave 1:

High = 1.2282; Low = 1.2239;

Height = High – Low = 1.2282– 1.2239= 0.0043 = 43 pips

Wave 2:

High = 1.2282; Low = 1.2241;

Height = High – Low = 1.2282– 1.2241= 0.0041 = 41 pips

Wave 3:

High = 1.2273; Low = 1.2236;

Height = High – Low = 1.2273– 1.2236= 0.0037 = 37 pips

Wave 4:

High = 1.2271; Low = 1.2244;

Height = High – Low = 1.2271– 1.2244= 0.0027 = 27 pips

The nearest movement to our starting position with a height greater than 40 pips is the wave 1. So that's our active wave now. Throughout our trading we are not going to pay attention to movements with a height below 40 pips.

The wave 1 is now our current active wave (see blue line in Figure 5.4).



Figure 5.4.

The task is now to apply the Intraday ICWR Trading Rules.

That means, first the Fibonacci levels 0.000, 0.250, 0.382, 0.682, 0.750 and 1.000 are inserted using the low as the starting point (level 0.000) and the high as the ending point (level 1.000). The levels between 0.382 and 0.618 define the retracement channel. The levels 0.250 and 0.750 define the confirmation levels. See Figure 5.5.



Figure 5.5.

Ok, the Fibonacci levels are placed, now it's about to see what the market is telling us

At 11:10 on the 11/03/04 the candlestick is below the lower confirmation level (Fibonacci level 0.250). Before, the retracement channel was entered at 08:30. Since the active wave had a downward movement and the candlestick is below the lower confirmation level we identify the active wave as a downward impulsive wave. As explained in the chapter 3 "Intraday ICWR Trading Rules" this is a bearish signal. See Figure 5.6.



Figure 5.6.

This bearish signal must be confirmed with the Relative Strength Index. If the RSI is lower than 50, it's bearish and we enter the market. If RSI is greater than 50, it's bullish, so it's opposite and we do not enter the market. The RSI (blue line in Figure 5.7) is below the 50 centerline (black line) and therefore bearish.



Figure 5.7.

As **both** signals are bearish we enter the trade at 11:10 on the 11/03/04 at the price of 1.2243. For example we buy 10,000 USD for the price of 1.2243. See Figure 5.8.



Figure 5.8.

Ok, now it's about to find how far we will let the market move before we exit our position.

First of all we place a stop order 50 pips below the entry price. That means at $1.2243 + 0.0050 = 1.2293$. It's represented by the thick red horizontal line in the picture below (Figure 5.9). Please notice, as said before, that the hard stop order is only for the sake of security, because we do not want to lose more than 50 pips in one trade.



Figure 5.9.

In fact, our **main** exit strategy is to look for an opposite signal generated by an impulsive/corrective wave retracement (in the same manner as for the entry warning signal).

In this example we are looking for a bullish signal as we entered short the market. The task is to look for a whole candlestick being above the upper confirmation level (after having entered the retracement channel in the case of an impulsive wave). If this happens we exit the position. Every time a new wave is recognized, new Fibonacci levels are drawn and the old Fibonacci levels get inactive. This procedure is repeated until an exit signal occurs.

Ok, let's look to our opened position at 11:10. Between 11:10 and 12:00 no bearish signal occurs. So, we don't exit the trade.

Remember the bullish signal is in this example the exit signal!

Around 12:00 we recognize a new active wave represented by the downward movement starting at 10:05 and ending at 11:25 on the 11/03/04. The beginning and the end of the new active wave are marked with red arrows in Figure 5.10.



Figure 5.10.

New Fibonacci levels are drawn. The old ones are now inactive (see Figure 5.11).



Figure 5.11.

For this active wave no exit signal occurs. Instead around 16:00 we recognize a new active wave represented by the downward movement starting at 13:05 and ending at 15:30 on the 11/03/04. See Figure 5.12.



Figure 5.12.

New Fibonacci levels are drawn and the old ones removed (see Figure 5.13). Now we are again looking for a candlestick going below the lower confirmation level.



Figure 5.13.

Once again around 17:30 on the 11/03/04 a new active wave has been recognized before an exit signal occurs. The new active wave is represented by the downward movement starting at 16:35 and ending at 17:00 on the 11/24/04. Please notice that the height of the previous downward movement was too low to be considered as an active wave. See Figure 5.14.



Figure 5.14.

New Fibonacci levels are drawn and the old ones removed (see Figure 5.15).



Figure 5.15.

This happens now several times.

Around 21:00 on the day 11/03/04 a new active wave has been recognized before an exit signal occurs. The new active wave is represented by the downward movement starting at 19:00 and ending at 20:10 on the 11/03/04. See Figure 5.16.



Figure 5.16.

New Fibonacci levels are drawn and the old ones removed (see Figure 5.17).



Figure 5.17.

Again around 01:00 on the day 11/03/04 a new active wave has been recognized before an exit signal occurs. The new active wave is represented by the downward movement starting at 22:50 on the 11/03/04 and ending at 00:10 on the 11/04/04. See Figure 5.18.



Figure 5.18.

New Fibonacci levels are drawn and old ones removed (see Figure 5.19).



Figure 5.19.

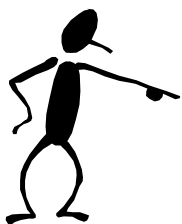
Around 07:00 the market trend starts to reverse (see Figure 5.20). At 09:20 on the 11/04/04 the candlestick is above the upper confirmation level (Fibonacci level 0.750). Since the active wave had a downward movement and the candlestick is above the upper confirmation level we identify the active wave as an downward corrective wave. As explained in the chapter “Intraday ICWR Trading Rules” this is a bullish signal.



Figure 5.20.

Please notice that the height of the previous downward movement (between 02:00 and 03:00) was too low to be considered as an active wave.

Because of the bullish signal the position is exited at 09:20 on the 11/04/04 selling 10,000 USD for the price of 1.2088.



At the end using the Intraday ICWR Trading Rules a profit of 155 pips= (1.2243 – 1.2088) = 0.0155 was achieved (see Figure 5.21).

Using a 1:20 leverage this means

10,000 USD x (0.0155 pips) x 20 leverage = 3,100 USD!

A profit of 3,100 USD for two trading days using the Intraday ICWR Trading Rules!



Figure 5.21.



Chapter 6

The Long-Term ICWR Trading Rules

The Long-Term ICWR Trading Rules are very similar to the Intraday ICWR Trading Rules (see chapter 3.), as only the values of some parameters are changed. Because of that fact we will not repeat all the explanations as done before for the Intraday ICWR Trading Rules. Basically, we are only going to repeat the basics of the strategy, pointing out the main differences between the Long-Term and the Intraday ICWR Trading Rules.

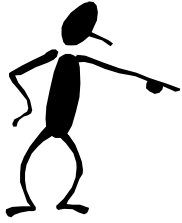
The Long-Term ICWR Trading Rules are composed of:

- Entry signals generated by impulsive/corrective wave retracements using a **four hours** candlestick chart. The condition for an active wave is a height of **150** pips or more.
- Entry confirmation signals generated from a 1-day based 14-period Relative Strength Index (RSI) momentum indicator in order to confirm the bullish or bearish entry signal from the **four hours** candlestick chart (acting as a filter for entry signals)
- Exit signals generated by impulsive/corrective wave retracements or by a hard stop order of **100** pips using a **four hours** candlestick chart. The condition for an active wave is a height of **150** pips or more.

Using the 4 hour candlestick chart doesn't mean that you have to look every 4 hours at the candlestick chart. It is enough that you check the chart once per day. For example, when you return from work, or when you get up, or before you go to bed...

6.1. When to enter a trade

In short, we are going to enter a trade, when a signal generated by an impulsive/corrective wave retracement is confirmed with the 1-day 14-period Relative Strength Index.

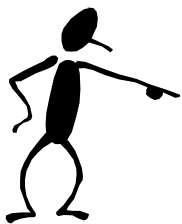


If the signal generated by an impulsive/corrective wave retracement is bullish we ask for the RSI to be greater than 50.

If the signal generated by an impulsive/corrective wave retracement is bearish we ask for the RSI to be lower than 50.

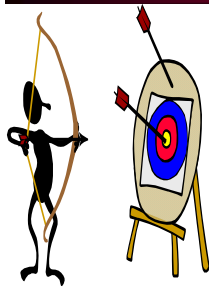
6.2. When to exit a trade

Our main exit strategy is to look for an opposite market signal (opposite to our entry signal) based on impulsive/corrective wave retracements (in the same manner as for the entry warning signal). Additionally (only for the sake of security) after entering a position we place a stop order of 100 pips, because we do not want to lose more than 100 pips in one trade.



If the market was entered long a position will be exited either because of a bearish signal generated by an impulsive/corrective wave retracement or because of the hard stop order 100 pips below the entry price.

If the market was entered short a position will be exited either because of a bullish signal generated by an impulsive/corrective wave retracement or because of the hard stop order 100 pips above the entry price.



Chapter 7

Long-Term EUR/USD Trading Example

In this example we are going to trade EUR/USD.

Ok, before we start our trading day we need to set up our screens (see Figure 7.1). On the left screen we are going to place a 4 hours candlestick chart and on the right screen a one day candlestick chart together with the 14-period RSI (thick blue line). The charting software usually pictures the RSI automatically together with the 30 and 70 lines (below 30 represents oversold, above 70 overbought). In our case we are not looking for oversold or overbought signals. We are looking for the market being bullish or bearish. This is represented by RSI being above 50 (bullish) or below 50 (bearish). So we only need to draw the 50 centerline (black line).



Figure 7.1.

Now we are ready to start. Suppose you started your trading day on the 10/14/04 at 08:00. At that time the price was 1.2363. As you can see from the right screen the RSI is above 50 and therefore bullish. So we are looking for a bullish signal for entering long the market.



Figure 7.2.

Next thing to do is to recognize the active wave. For that, we are going to look for the nearest market movement to our starting position with a height greater than 150 pips.

Ok, in order to find the active wave the following steps are to be done:

First all possible waves (black lines) are drawn connecting the high value of the starting point with the low value of the ending point and then the waves are enumerated starting with the nearest wave to the actual time (see Figure 7.3).



Figure 7.3.

Second read the extreme values of each wave and calculate its height.

Wave 1:

High = 1.2433; Low = 1.2223;

Height = High – Low = 1.2433 – 1.2223 = 0.0210 = 210 pips

Wave 2:

High = 1.2433; Low = 1.2243;

Height = High – Low = 1.2433 – 1.2243 = 0.0190 = 190 pips

The nearest movement to our starting position with a height greater than 150 pips is the wave 1. So that's our active wave now. Throughout our trading we are not going to pay attention to movements with a height below 150 pips .

The wave 1 is now our current active wave (see blue line in Figure 7.4).



Figure 7.4.

The task is now to apply the Long-Term ICWR Trading Rules.

That means, first the Fibonacci levels 0.000, 0.250, 0.382, 0.682, 0.750 and 1.000 are inserted using the low as the starting point (level 0.000) and the high as the ending point (level 1.000). The levels between 0.382 and 0.618 define the retracement channel. The levels 0.250 and 0.750 define the confirmation levels. See Figure 7.5.



Figure 7.5.

Ok, the Fibonacci levels are placed, now it's about to see what the market is telling us.

At 16:00 on the 10/15/04 the candlestick is above the upper confirmation level (Fibonacci level 0.750). Since the active wave had a downward movement and the candlestick is above the upper confirmation level we identify the active wave as a downward corrective wave. As explained in the chapter 3. "Intraday ICWR Trading Rules" this is a bullish signal. See Figure 7.6.



Figure 7.6.

This bullish signal must be confirmed with the Relative Strength Index. If the RSI is greater than 50, it's bullish and we enter the market. If RSI is less than 50, it's bearish, so it's opposite and we do not enter the market. The RSI (blue line in Figure 7.7) is above the 50 centerline (black line) and therefore bullish.



Figure 7.7.

As **both** signals are bullish we enter the trade at 16:00 on the 10/15/04 at the price of 1.2461. For example we sell 10,000 USD for the price of 1.2461. See Figure 7.8.



Figure 7.8.

Ok, now it's about to find how far we will let the market move before we exit our position.

First of all we place a stop order 100 pips below the entry price. That means at $1.2461 - 0.0100 = 1.2361$. It's represented by the thick red horizontal line in the picture below (see Figure 7.9). Please notice, as said before, that the hard stop order is only for the sake of security, because we do not want to lose more than 100 pips in one trade.



Figure 7.9.

In fact, our **main** exit strategy is to look for an opposite signal generated by an impulsive/corrective wave retracement (in the same manner as for the entry warning signal).

In this example we are looking for a bearish signal as we entered long the market. The task is to look for a whole candlestick being below the lower confirmation level (after having entered the retracement channel in the case of an impulsive wave). If this happens we exit the position. Every time a new wave is recognized, new Fibonacci levels are drawn and the old Fibonacci levels get inactive. This procedure is repeated until an exit signal occurs.

Ok, let's look to our opened position. Between 10/15/04 and the 10/26/04 no bearish signal occurs. So, we don't exit the trade. Remember the bearish signal is in this example the exit signal.

Around the 10/27/04 we recognize a new active wave represented by the upward movement starting the 10/12/04 and ending the 10/26/04. The beginning and the end of the new active wave are marked with red arrows in Figure 7.10.



Figure 7.10.

New Fibonacci levels are drawn. The old ones are now inactive (see Figure 7.11).



Figure 7.11.

For this active wave no exit signal occurs. Instead around the 10/29/04 we recognize a new active wave represented by the upward movement starting on the 10/26/04 and ending on the 10/28/04. See Figure 7.12.



Figure 7.12.

New Fibonacci levels are drawn. The old ones are now inactive (see Figure 7.13).



Figure 7.13.

Around the 11/01/04 a new active wave has been recognized before an exit signal occurs. The new active wave is represented by the upward movement starting on the 10/28/04 and ending on the 11/01/04. See Figure 7.14.



Figure 7.14.

New Fibonacci levels are drawn. The old ones are now inactive (see Figure 7.15).



Figure 7.15.

Around the 11/03/04 a new active wave has been recognized before an exit signal occurs. The new active wave is represented by the upward movement starting on the 11/01/04 and ending on the 11/03/04. See Figure 7.16.



Figure 7.16.

New Fibonacci levels are drawn. The old ones are now inactive (see Figure 7.17).



Figure 7.17.

Around the 11/08/04 a new active wave has been recognized before an exit signal occurs. The new active wave is represented by the upward movement starting on the 11/03/04 and ending on the 11/07/04. See Figure 7.18.



Figure 7.18.

New Fibonacci levels are drawn. The old ones are now inactive (see Figure 7.19).



Figure 7.19.

Around the 11/12/04 a new active wave has been recognized before an exit signal occurs. The new active wave is represented by the upward movement starting on the 11/07/04 and ending on the 11/10/04. See Figure 7.20.



Figure 7.20.

New Fibonacci levels are drawn. The old ones are now inactive (see Figure 7.21).



Figure 7.21.

Around the 11/18/04 a new active wave has been recognized before an exit signal occurs. The new active wave is represented by the upward movement starting on the 11/10/04 and ending on the 11/18/04. See Figure 7.22.



Figure 7.22.

New Fibonacci levels are drawn. The old ones are now inactive (see Figure 7.23).



Figure 7.23.

Around the 11/29/04 a new active wave has been recognized before an exit signal occurs. The new active wave is represented by the upward movement starting on the 11/23/04 and ending on the 11/26/04. See Figure 7.24.

Please remember that movements with a height less than 150 pips are not taken into account!



Figure 7.24.

New Fibonacci levels are drawn. The old ones are now inactive (see Figure 7.25).



Figure 7.25.

Around the 12/02/04 a new active wave has been recognized before an exit signal occurs. The new active wave is represented by the upward movement starting on the 11/30/04 and ending on the 12/02/04. See Figure 7.26.



Figure 7.26.

New Fibonacci levels are drawn. The old ones are now inactive (see Figure 7.27).



Figure 7.27.

Around the 12/03/04 a new active wave has been recognized before an exit signal occurs. The new active wave is represented by the upward movement starting on the 12/02/04 and ending on the 12/02/04. See Figure 7.28.



Figure 7.28.

New Fibonacci levels are drawn. The old ones are now inactive (see Figure 7.29).



Figure 7.29.

Around the 12/06/04 a new active wave has been recognized before an exit signal occurs. The new active wave is represented by the upward movement starting on the 12/02/04 and ending on the 12/03/04. See Figure 7.30.



Figure 7.30.

New Fibonacci levels are drawn. The old ones are now inactive (see Figure 7.31).



Figure 7.31.

Around the 12/09/04 a new active wave has been recognized before an exit signal occurs. The new active wave is represented by the upward movement starting on the 12/07/04 and ending on the 12/08/04. See Figure 7.32.



Figure 7.32.

New Fibonacci levels are drawn. The old ones are now inactive (see Figure 7.33).



Figure 7.33.

The same day a little bit later a new active wave has been recognized before an exit signal occurs. The new active wave is represented by the upward movement starting on the 12/09/04 and ending on the 12/09/04. See Figure 7.34.



Figure 7.34.

New Fibonacci levels are drawn. The old ones are now inactive (see Figure 7.35).



Figure 7.35.

The market trend starts to reverse. At 12:00 on the 12/10/04 the candlestick is below the lower confirmation level (Fibonacci level 0.250). Since the active wave had a upward movement and the candlestick is below the lower confirmation level we identify the active wave as an upward corrective wave. As explained in the chapter 3. “Intraday ICWR Trading Rules” this is a bearish signal. See Figure 7.36.



Figure 7.36.

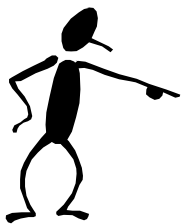
Because of the bearish signal the position is exited at 12:00 on the 12/10/04 buying 10,000 USD for the price of 1.3184.

At the end using the Long-Term ICWR Trading Rules a profit of 723 pips = $(1.3184 - 1.2461) = 0.0723$ was achieved (see Figure 7.37).

Using a 1:20 leverage this means

10,000 USD x (0.0723 pips) x 20 leverage = 14,460 USD!

A profit of 14,460 USD after two months using the Long-Term ICWR Trading Rules!



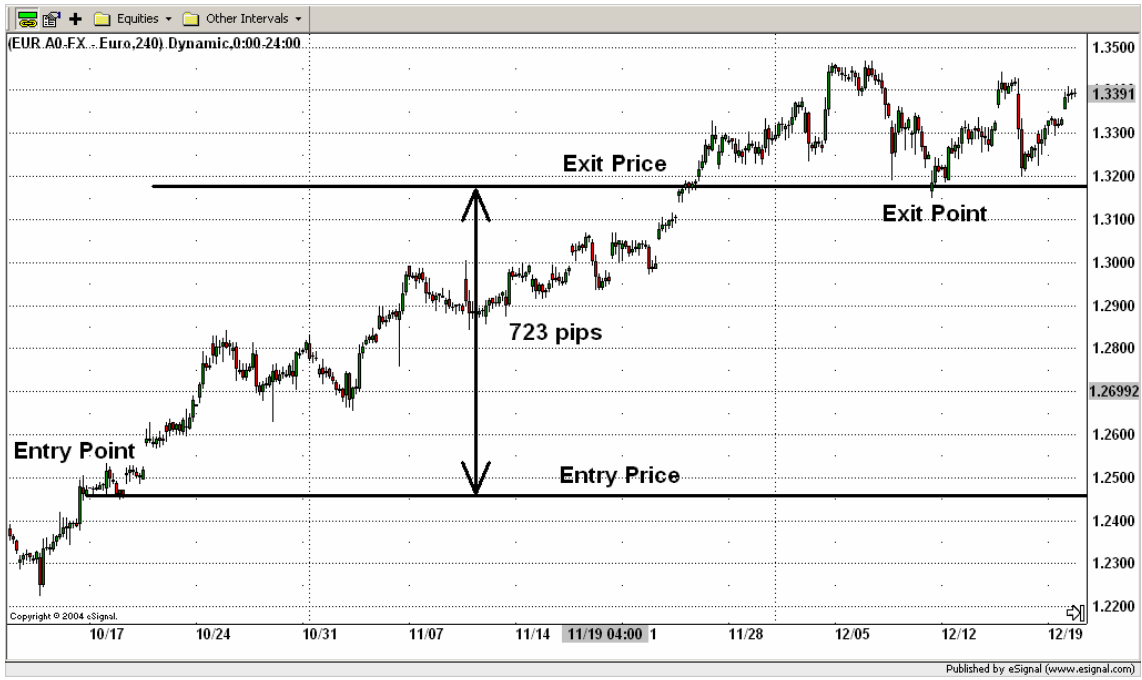


Figure 7.37.



Chapter 8

Long-Term GBP/USD Trading Example

In this example we are going to trade GBP/USD.

Ok, before we start our trading day we need to set up our screens (see Figure 8.1). On the left screen we are going to place a 4 hours candlestick chart and on the right screen a one day candlestick chart together with the 14-period RSI (thick blue line). The charting software usually pictures the RSI automatically together with the 30 and 70 lines (below 30 represents oversold, above 70 overbought). In our case we are not looking for oversold or overbought signals. We are looking for the market being bullish or bearish. This is represented by RSI being above 50 (bullish) or below 50 (bearish). So we only need to draw the 50 centerline (black line).



Figure 8.1.

Now we are ready to start. Suppose you started your trading day on the 11/19/04 at 08:00. At that time the price was 1.8490. As you can see from the right screen the RSI is above 50 and therefore bullish. So we are looking for a bullish signal for entering long the market.



Figure 8.2.

Next thing to do is to recognize the active wave. For that, we are going to look for the nearest market movement to our starting position with a height greater than 150 pips.

Ok, in order to find the active wave the following steps are to be done:

First all possible waves (black lines) are drawn connecting the high value of the starting point with the low value of the ending point and then the waves are enumerated starting with the nearest wave to the actual time (see Figure 8.3).



Figure 8.3.

Second read the extreme values of each wave and calculate its height.

Wave 1:

High = 1.8636; Low = 1.8464;

Height = High – Low = 1.8636– 1.8464= 0.0172 = 172 pips

Wave 2:

High = 1.8636; Low = 1.8435;

Height = High – Low = 1.8636– 1.8435= 0.0201 = 201 pips

Wave 3:

High = 1.8596; Low = 1.8435;

Height = High – Low = 1.8596– 1.8435= 0.0161 = 161 pips

Wave 4:

High = 1.8596; Low = 1.8372;

Height = High – Low = 1.8596– 1.8372= 0.0224 = 224 pips

The nearest movement to our starting position with a height greater than 150 pips is the wave 1. So that's our active wave now. Throughout our trading we are not going to pay attention to movements with a height below 150 pips .

The wave 1 is now our current active wave (see blue line in Figure 8.4).



Figure 8.4.

The task is now to apply the Long-Term ICWR Trading Rules.

That means, first the Fibonacci levels 0.000, 0.250, 0.382, 0.682, 0.750 and 1.000 are inserted using the low as the starting point (level 0.000) and the high as the ending point (level 1.000). The levels between 0.382 and 0.618 define the retracement channel. The levels 0.250 and 0.750 define the confirmation levels. See Figure 8.5.



Figure 8.5.

Ok, the Fibonacci levels are placed, now it's about to see what the market is telling us

At 12:00 on the 11/23/04 the candlestick is above the upper confirmation level (Fibonacci level 0.750). Since the active wave had a downward movement and the candlestick is above the upper confirmation level we identify the active wave as an upward corrective wave. As explained in the chapter 3. "Intraday ICWR Trading Rules" this is a bullish signal. See Figure 8.6.



Figure 8.6.

This bullish signal must be confirmed with the Relative Strength Index. If the RSI is greater than 50, it's bullish and we enter the market. If RSI is less than 50, it's bearish, so it's opposite and we do not enter the market. The RSI (see blue line in Figure 8.7) is above the 50 centerline (black line) and therefore bullish.



Figure 8.7.

As **both** signals are bullish we enter the trade at 12:00 on the 11/23/04 at the price of 1.8698. For example we sell 10,000 USD for the price of 1.8698. See Figure 8.8.



Figure 8.8.

Ok, now it's about to find how far we will let the market move before we exit our position.

First of all we place a stop order 100 pips below the entry price. That means at $1.8698 - 0.0100 = 1.8598$. It's represented by the thick red horizontal line in the picture below (see Figure 8.9). Please notice, as said before, that the hard stop order is only for the sake of security, because we do not want to lose more than 100 pips in one trade.



Figure 8.9.

In fact, our **main** exit strategy is to look for an opposite signal generated by an impulsive/corrective wave retracement (in the same manner as for the entry warning signal).

In this example we are looking for a bearish signal as we entered long the market. The task is to look for a whole candlestick being below the lower confirmation level (after having entered the retracement channel in the case of an impulsive wave). If this happens we exit the position. Every time a new wave is recognized, new Fibonacci levels are drawn and the old Fibonacci levels get inactive. This procedure is repeated until an exit signal occurs.

Ok, let's look to our opened position. Between 10/15/04 and the 10/26/04 no bearish signal occurs. So, we don't exit the trade. Remember the bearish signal is in this example the exit signal.

Around the 11/28/04 we recognize a new active wave represented by the upward movement starting the 11/23/04 and ending the 11/26/04. The beginning and the end of the new active wave are marked with red arrows in Figure 8.10.



Figure 8.10.

New Fibonacci levels are drawn. The old ones are now inactive (see Figure 8.11).



Figure 8.11.

For this active wave no exit signal occurs. Instead around the 11/29/04 we recognize a new active wave represented by the downward movement starting on the 11/26/04 and ending on the 11/29/04. See Figure 8.12.



Figure 8.12.

New Fibonacci levels are drawn. The old ones are now inactive (see Figure 8.13).



Figure 8.13.

Around the 12/02/04 a new active wave has been recognized before an exit signal occurs. The new active wave is represented by the upward movement starting on the 11/29/04 and ending on the 12/02/04. See Figure 8.14.



Figure 8.14.

New Fibonacci levels are drawn. The old ones are now inactive (see Figure 8.15).



Figure 8.15.

Around the 12/03/04 a new active wave has been recognized before an exit signal occurs. The new active wave is represented by the downward movement starting on the 12/01/04 and ending on the 12/03/04. See Figure 8.16.



Figure 8.16.

New Fibonacci levels are drawn. The old ones are now inactive (see Figure 8.17).



Figure 8.17.

Around the 12/06/04 a new active wave has been recognized before an exit signal occurs. The new active wave is represented by the upward movement starting on the 12/03/04 and ending on the 12/03/04. See Figure 8.18.



Figure 8.18.

New Fibonacci levels are drawn. The old ones are now inactive (see Figure 8.19).



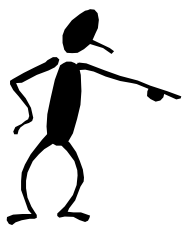
Figure 8.19.

The market trend starts to reverse (see Figure 8.20). At 08:00 on the 12/09/04 the candlestick is below the lower confirmation level (Fibonacci level 0.250). Since the active wave had a upward movement and the candlestick is below the lower confirmation level we identify the active wave as an upward corrective wave. As explained in the chapter 3. “Intraday ICWR Trading Rules” this is a bearish signal.



Figure 8.20.

Because of the bearish signal the position is exited at 12:00 on the 12/09/04 buying 10,000 USD for the price of 1.9212.



At the end using the Long-Term ICWR Trading Rules a profit of 514 pips= $(1.9212 - 1.8698) = 0.0514$ was achieved (see Figure 8.21).

Using a 1:20 leverage this means

10,000 USD x (0.0514 pips) x 20 leverage = 10,280 USD!

A profit of 10,280 USD after 20 days using the Long-Term ICWR Trading Rules!



Figure 8.21.